

IRIS Public Record**Key Information**

Main: GROUP/0416/BOMBARDMENT (LIGHT)

Document Type:

Call Number: GP-416-SU-OP-S

IRIS Number: 00091918

Accessions Notes:

Old Accession Nbr:

Title:

Beginning Date: 1944/08/02

End Date: 1944/08/02

Publication Date:

Classification UNCLAS

Media Roll #: 0000001711 First Frame: 634 Last Frame: 872 Linear Feet: 0

Old MFlm Roll # B0531 Audio Rec:

NUMPAGE 238

Title Extensions:

Abstract

Descriptive Notes: CONTAINS FIELD ORDERS, OPERATIONAL REPORTS, LOADING LISTS, NAVIGATIONAL DATA WITH CHARTS, TACTICAL DATA, TECHNICAL DATA, INTERROGATION FORMS AND REPORT OF CASUALTIES. INCLUSIVE DATES ARE ACTUALLY 2 THROUGH 9 AUG 44.

Title Added Entries: MISSION REPORTS, FOLDER NUMBER 9, MISSION NUMBERS 111 THROUGH 120

Author:**Subject:**

Major Command:

Administrative Markings

No Administrative Markings Listed

Security Review Information:

Revd:	Rel	1985/03/05
Indexer ID: 35	Entered Date:	
QC ID:	QC'd Date::	
Scanner ID:	Scanned Date:	
Acc ID	Acc Date:	

2 AUG 1944

MISSION REPORTS

FOLDER NO. 9

MISSION NO.	F.O. NO.	DATE
111	462	2 AUGUST 1944
112	465	4 AUGUST 1944
113	467	5 AUGUST 1944
114	468	5 AUGUST 1944
115	470	6 AUGUST 1944
116	471	6 AUGUST 1944
117	475	8 AUGUST 1944
118	476	8 AUGUST 1944
119	477	9 AUGUST 1944
120	478	9 AUGUST 1944

00001018

SCANNED BY ACD
2007-5

P.R.C.

DECLASSIFIED
DOD DIR 5200.9, 27 Sep 58

MICROFILMED

HEADQUARTERS
416TH BOMBARDMENT GROUP (L)
Office of the Commanding Officer

File

SECRET
By authority
OO, Sta. 170
3 August 1944
Init. _____

APO 140, U. S. Army,
3 August 1944.

SUBJECT: Transmittal of A-3 Bombing Information Reports.

TO : Commanding General, IX Bomber Command, APO 140, U. S. Army.

Transmitted herewith are the A-3 Bombing Information Reports on operational mission 2 August 1944.

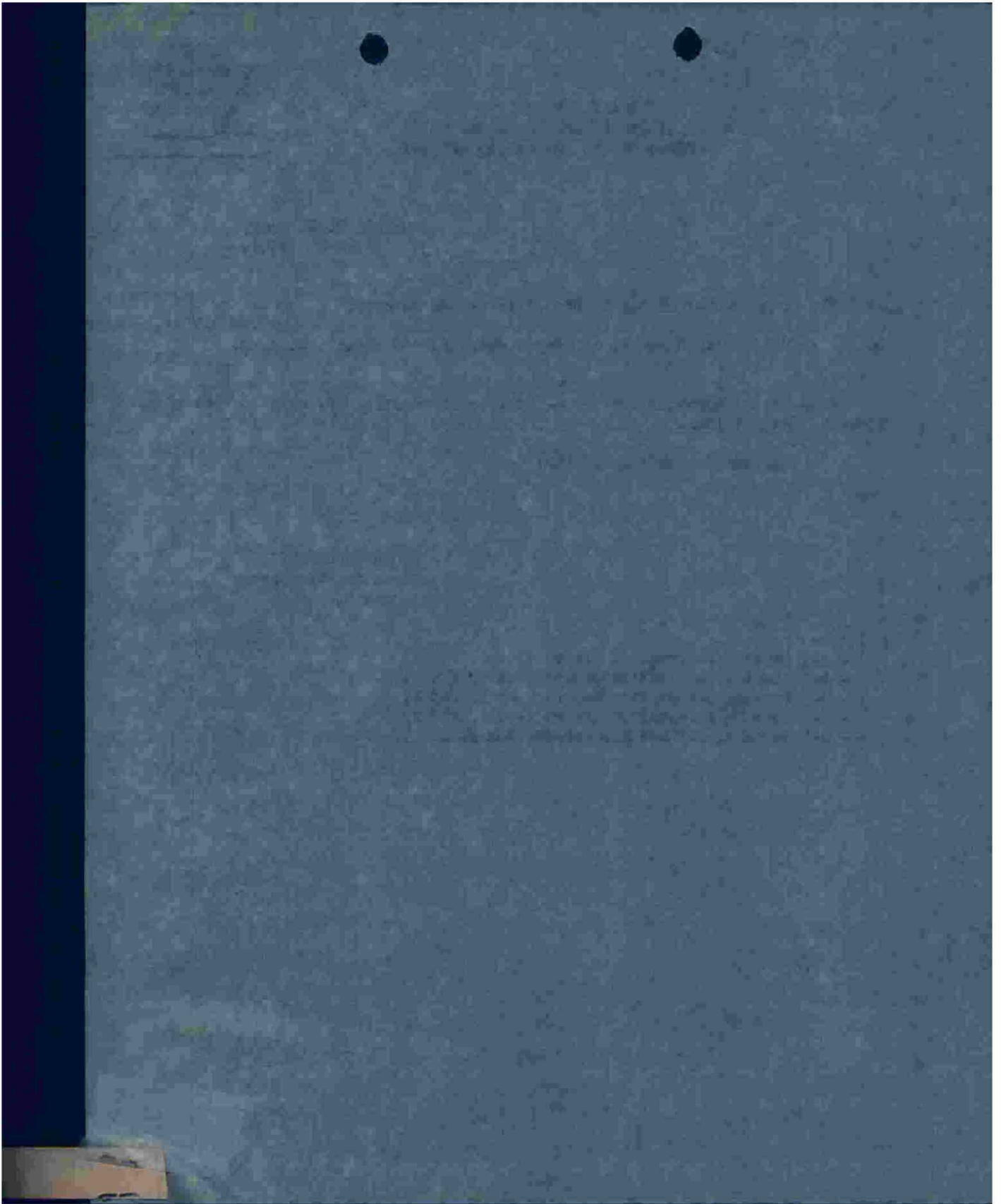
For the Commanding Officer:

GEORGE JOHANNIN,
Captain, Air Corps,
Adjutant.

5 Incls:

- 1 - A-3 Bombing Information Report (Box 1, flt 1)
- 2 - A-3 Bombing Information Report (Box 1, flt 2)
- 3 - A-3 Bombing Information Report (Box 2, flt 1)
- 4 - A-3 Bombing Information Report (Box 2, flt 2)
- 5 - A-3 Bombing Information Report (Box 2, flt 3)

AUG 2 1944
#111



File

HEADQUARTERS
416TH BOMBARDMENT GROUP (L)
Office of the Commanding Officer

SECRET
By authority
G.O. Sta. 170
3 August 1944
Init. _____

APO 140, U. S. Army.
3 August 1944.

SUBJECT: Report of Material and Mechanical Failures.

TO : Commanding Officer, 97th Combat Wing (L), APO 140, U. S. Army.

In compliance with letter, your Headquarters, dated 25 June 1944, subject as above, the following report is submitted:

416th Bomb Op (L), 111th Mission, 2 August 1944,
97th Combat Wing Field Order Number 158-462.

1. 41
2. 39
3. 33
4. 2 (squares)
5. 6
6. Leader of third flight, first box did not drop due to malfunction of bomb sight release mechanism.
 - 43-21711 Lt. F. W. DeLand
 - 43-10165 Lt. A. E. Hansen
 - 43-9956 Lt. T. J. Murray
 - 43-9363 Lt. A. R. Duranto
 - 43-10214 Lt. C. L. Estes
 - 43-9719 Lt. H. F. Peir

For the Commanding Officer:

GEORGE SCHWABIN,
Captain, Air Corps,
Adjutant.

S E C R E T

ANNEX "A"

BOMBING INFORMATION

IX B.C. FIELD ORDER NO. 162BOX 1, 311 1 GROUP A16 DATE 2 Aug 1944 TARGET ATTACKED Gauchos Amm. Dump1. Method of Sighting: Pre-set with corrections.2. Bombing approach: 140° Ang.3. Was mercury erection system used? YES _____ NO X4. Did entire (~~box~~) (flight) drop on lead bombardier? YES X NO _____

In either case explain fully method of sighting and dropping of bombs, and specify exact aiming point actually used: Pre-set with corrections. NOT used as AP. No trail subtracted.

5. Name of lead Bombardier: St. Powell6. Name of lead Pilot: Major Hogg7. Intervalometer setting: None8. Indicated Air Speed: 290 Ground Speed: 240 Altitude: 12,000 ft9. Length of bomb run: 60 Sec10. Bomb Load and Fusing per A/C: 4 x 500 lb. FUSED 1/10 N 1/100 T11. Total Bombs Dropped: 25

12. Full statement of all factors affecting bombing - including: -

(a) Did weather conditions or visibility adversely affect identification of target attacked or bombing. YES _____ NO X. If "YES" state conditions and effect.

(b) Apart from weather or visibility, was any difficulty encountered in identifying target attacked, IP or AP? YES _____ NO X. If answer is "YES", state circumstances and effect on bombing:

(c) Did Flak affect bombing? YES _____ NO X. If answer is "YES", state to what extent did flak affect bombing or bomb run:

(d) To what extent did attacks by enemy aircraft affect bombing? None

(e) State any difficulties on bombing run: None

(f) Malfunctions, personnel errors or other factors affecting bombing: None

(g) Bombing results as reported by crews:

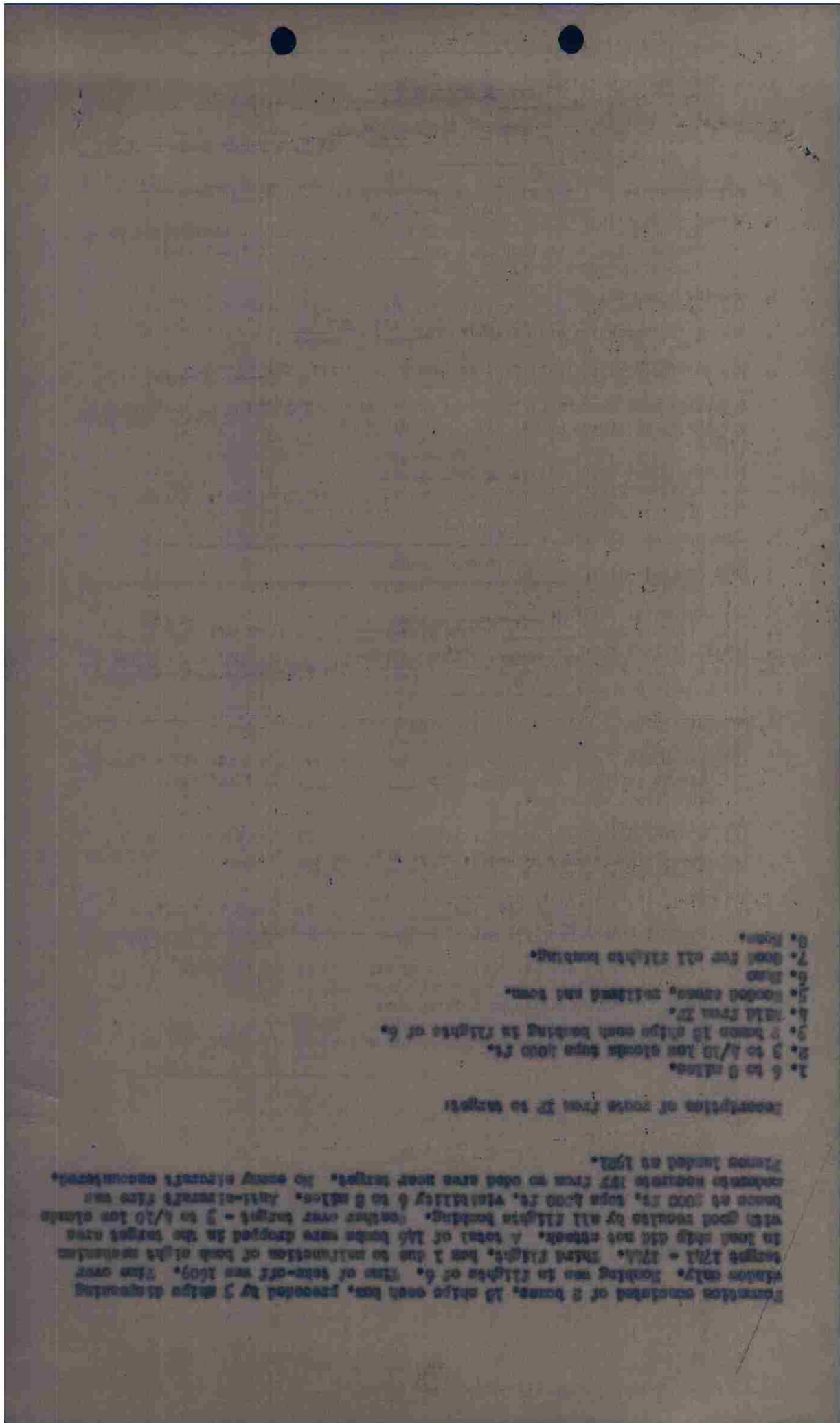
Aimed at right Target: YES X NO _____

Results claimed: EXCEL _____ GOOD X FAIR _____ POOR _____ GROSS _____

* 3 a/c bomb load 4 x 500 lb GP

S E C R E T

(Over)



- 1. 6 to 8 miles.
- 2. 3 to 4/10 low altitude target area.
- 3. 2 to 3 miles each heading in flight of 6.
- 4. 1/10 low altitude.
- 5. 1/10 low altitude, rolling and form.
- 6. 1/10 low altitude.
- 7. 1/10 low altitude heading.
- 8. 1/10 low altitude.

Identification of route from 1/10 to target

Formation consisted of 2 planes, 1/10 miles each heading, preceded by 1/10 miles at starting station only. Heading was in flight of 6. Time of take-off was 1609. This was target 1/10 - 1/10. 1/10 miles, low 1 due to malfunction of both of its navigation in low altitude not reached. A total of 1/10 heading were dropped in the target area with good results by all flights heading. Further over target - 1/10 to 4/10 low altitude from 1600 to 1605, 1/10 heading 6 to 8 miles. 1/10 heading 1/10 heading. This was 1/10 heading 1/10 heading. No enemy aircraft encountered.

S E C R E T

ANNEX "A"

BOMBING INFORMATION

IX B.C. FIELD ORDER NO. 162BOX 1, 1st 2 GROUP 416 DATE 2 Aug 1944 TARGET ATTACKED Guadalupe Arroyo Dam1. Method of Sighting: Pre-set with corrections.2. Bombing approach: 140°3. Was mercury erection system used? YES ___ NO X4. Did entire (~~team~~) (flight) drop on lead bombardier? YES X NO ___

In either case explain fully method of sighting and dropping of bombs, and specify exact aiming point actually used: Pre-set with corrections. AP used as AP.

5. Name of lead Bombardier: Lt. McFrien6. Name of lead Pilot: Captain Frontiss7. Intervalometer setting: None8. Indicated Air Speed: 200 Ground Speed: 240 Altitude: 12,2009. Length of bomb run: 70 Sec:10. Bomb Load and Fusing per A/C: 4 x 500 lb. FUSED 1/10 N 1/100 T11. Total Bombs Dropped: 36

12. Full statement of all factors affecting bombing - including: -

(a) Did weather conditions or visibility adversely affect identification of target attacked or bombing. YES ___ NO X. If "YES" state conditions and effect.

(b) Apart from weather or visibility, was any difficulty encountered in identifying target attacked, IP or AP? YES ___ NO X. If answer is "YES", state circumstances and effect on bombing:

(c) Did Flak affect bombing? YES ___ NO X. If answer is "YES", state to what extent did flak affect bombing or bomb run:

(d) To what extent did attacks by enemy aircraft affect bombing? None

(e) State any difficulties on bombing run: None

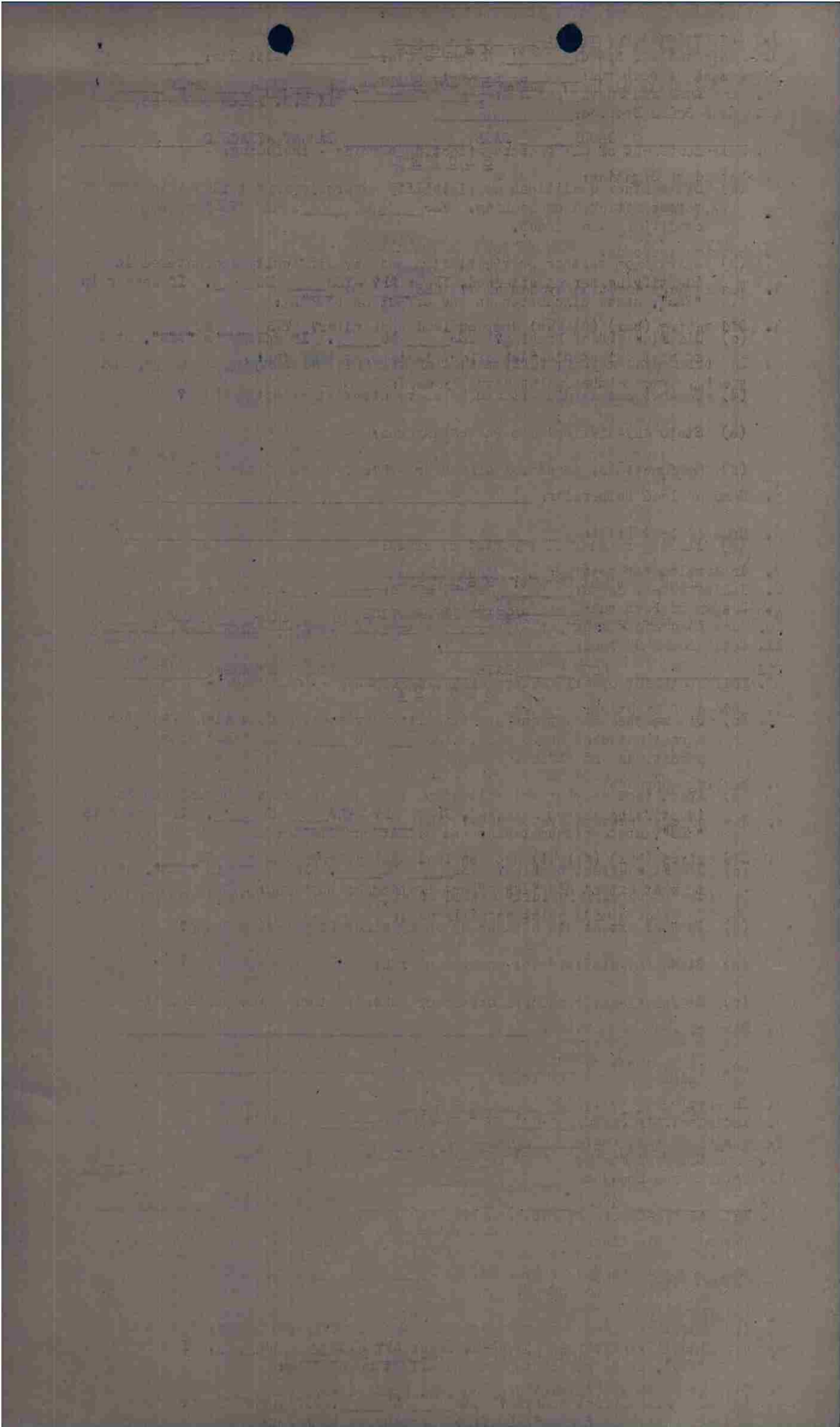
(f) Malfunctions, personnel errors or other factors affecting bombing: None

(g) Bombing results as reported by crews:

Aimed at right Target: YES X NO ___

Results claimed: EXCEL ___ GOOD X FAIR ___ POOR ___ GROSS ___

* 6 a/c bomb load 6 x 500 lb GP. S E C R E T



S E C R E T

ANNEX "A"

BOMBING INFORMATION

IX B.C. FIELD ORDER NO. 462BOX 2, flt 1 GROUP A16 DATE 2 Aug 1944 TARGET ATTACKED Caudebec Ammo Dump1. Method of Sighting: Pre-set with corrections.2. Bombing approach: 135°3. Was mercury erection system used? YES _____ NO X4. Did entire (~~crew~~) (flight) drop on lead bombardier? YES X NO _____

In either case explain fully method of sighting and dropping of bombs, and specify exact aiming point actually used: Pre-set with corrections, MPI used as AP.

5. Name of lead Bombardier: Lt. Walter Hally6. Name of lead Pilot: Capt. Jackson7. Intervalometer setting: None8. Indicated Air Speed: 200 Ground Speed: 240 Altitude: 11,5009. Length of bomb run: 60 Sec:*10. Bomb Load and Fusing per A/C: 4 x 500 lb. FUSED 1/10 N 1/100 T11. Total Bombs Dropped: 25

12. Full statement of all factors affecting bombing - including: -

(a) Did weather conditions or visibility adversely affect identification of target attacked or bombing. YES _____ NO X. If "YES" state conditions and effect.

(b) Apart from weather or visibility, was any difficulty encountered in identifying target attacked, IP or AP? YES _____ NO X. If answer is "YES", state circumstances and effect on bombing:

(c) Did Flak affect bombing? YES _____ NO X. If answer is "YES", state to what extent did flak affect bombing or bomb run:

(d) To what extent did attacks by enemy aircraft affect bombing? None

(e) State any difficulties on bombing run: None

(f) Malfunctions, personnel errors or other factors affecting bombing:
None

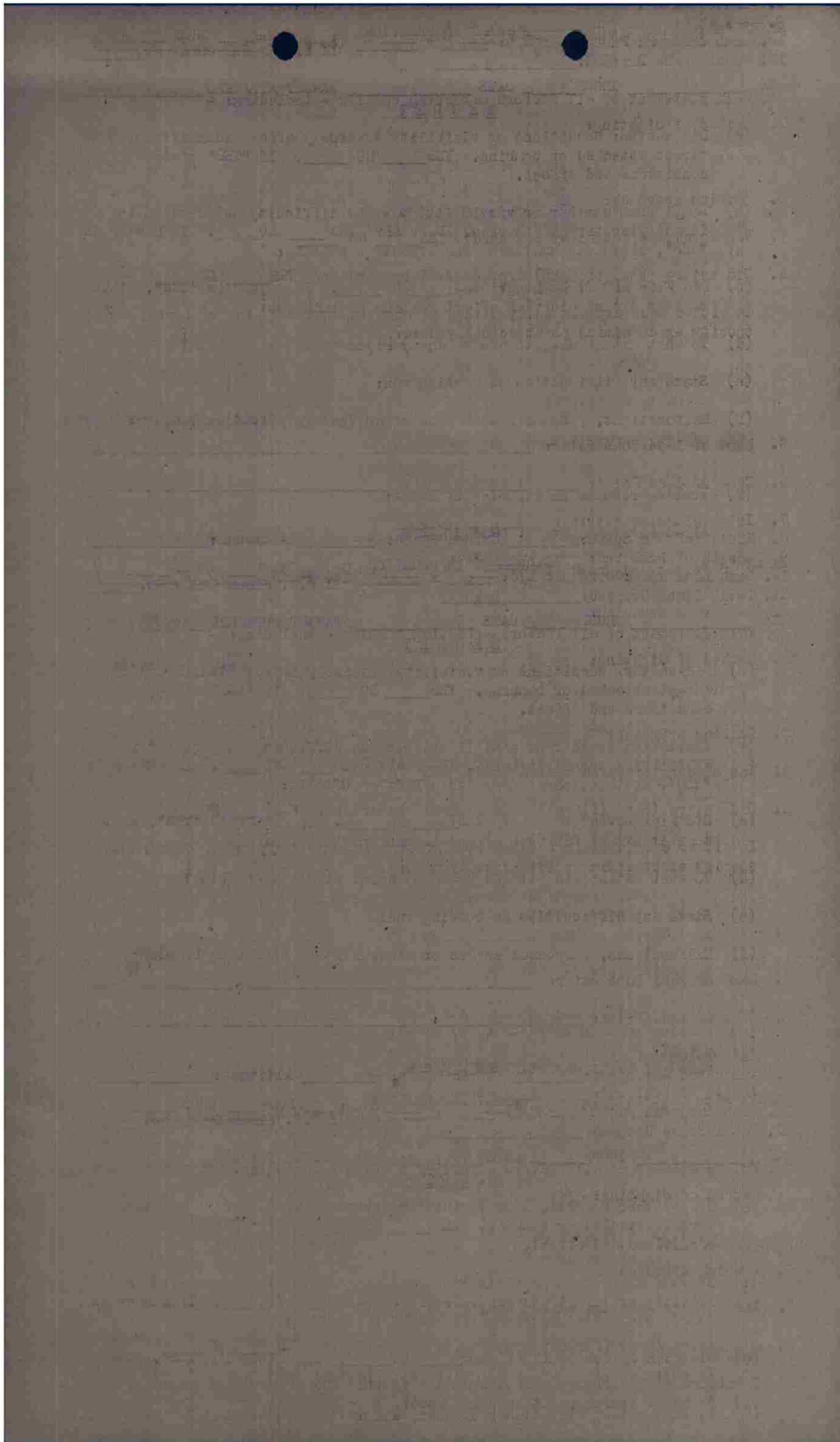
(g) Bombing results as reported by crews:

Aimed at right Target: YES X NO _____

Results claimed: EXCEL. _____ GOOD X FAIR _____ POOR _____ GROSS _____

* 1 a/c bomb load 6 x 500 lb GP.

S E C R E T



S E C R E T

ANNEX "A"

BOMBING INFORMATION

IX B.C. FIELD ORDER NO. 462BOX 2, Flt 2 GROUP A16 DATE 2 Aug 44 TARGET ATTACKED Gaudebec Ammo Dump1. Method of Sighting: Pre-set with corrections.2. Bombing approach: 140°3. Was mercury erection system used? YES ___ NO X4. Did entire ~~(team)~~ (flight) drop on lead bombardier? YES X NO ___

In either case explain fully method of sighting and dropping of bombs, and specify exact aiming point actually used: Pre-set with corrections. IFT used as AP. No trail subtracted.

5. Name of lead Bombardier: Lt. Ruppits6. Name of lead Pilot: Capt. Huff7. Intervalometer setting: None8. Indicated Air Speed: 200 Ground Speed: 240 Altitude: 11,6009. Length of bomb run: 80 Sec:* 10. Bomb Load and Fusing per A/C: 4 x 500 lb. FUSED 1/10 N 1/100 T11. Total Bombs Dropped: 24

12. Full statement of all factors affecting bombing - including: -

(a) Did weather conditions or visibility adversely affect identification of target attacked or bombing. YES ___ NO X. If "YES" state conditions and effect.

(b) Apart from weather or visibility, was any difficulty encountered in identifying target attacked, IP or AP? YES ___ NO X. If answer is "YES", state circumstances and effect on bombing:

(c) Did Flak affect bombing? YES ___ NO X. If answer is "YES", state to what extent did flak affect bombing or bomb run:

(d) To what extent did attacks by enemy aircraft affect bombing? None.

(e) State any difficulties on bombing run: None

(f) Malfunctions, personnel errors or other factors affecting bombing: None

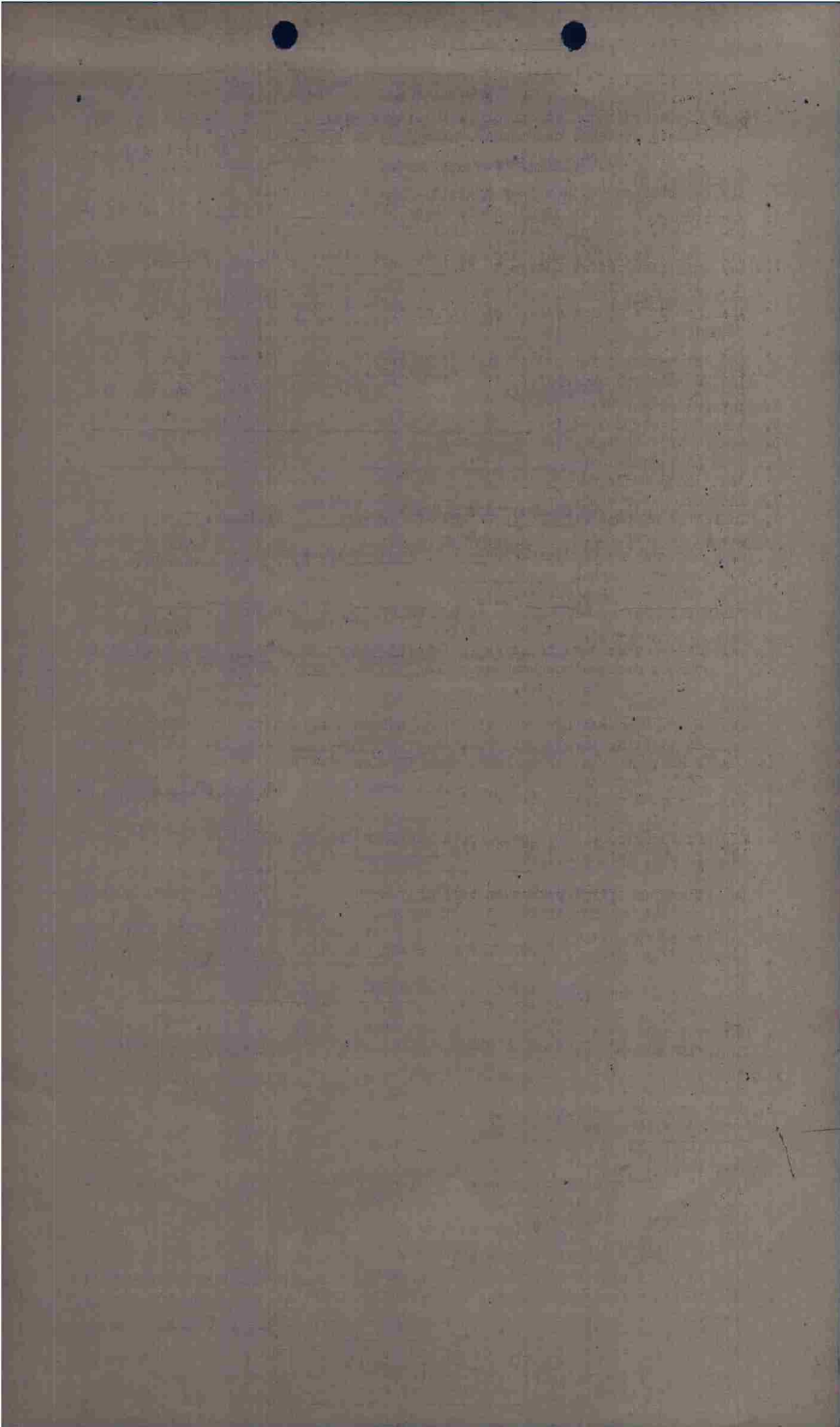
(g) Bombing results as reported by crews:

Aimed at right Target: YES X NO ___

Results claimed: EXCEL ___ GOOD X FAIR ___ POOR ___ GROSS ___

* 5 a/c bomb load 6 x 500 lb GP.

S E C R E T



SECRET

ANNEX "A"

BOMBING INFORMATION

IX B.C. FIELD ORDER NO. _____

BOX 2, Flt 9 GROUP 416 DATE 2 Aug 44 TARGET ATTACKED Caudebec Ammo Dump1. Method of Sighting: Pre-set with corrections.2. Bombing approach: 140°3. Was mercury erection system used? YES _____ NO X4. Did entire ^{flight} ~~bomb~~ drop on lead bombardier? YES X NO _____In either case explain fully method of sighting and dropping of bombs, and specify exact aiming point actually used: Pre-set with corrections. MFI used as AP. No trail subtracted.5. Name of lead bombardier: Lt. Moore.6. Name of lead pilot: Lt. Morton7. Intervalometer setting: None8. Indicated Air Speed: 200 Ground Speed: 240 Altitude: 11,6009. Length of bomb run: 75 Sec:10. Bomb Load and Fusing per A/C: 4 X 500 lb FUSED 1/10W 1/10011. Total Bombs Dropped: 26

12. Full statement of all factors affecting bombing - including: -

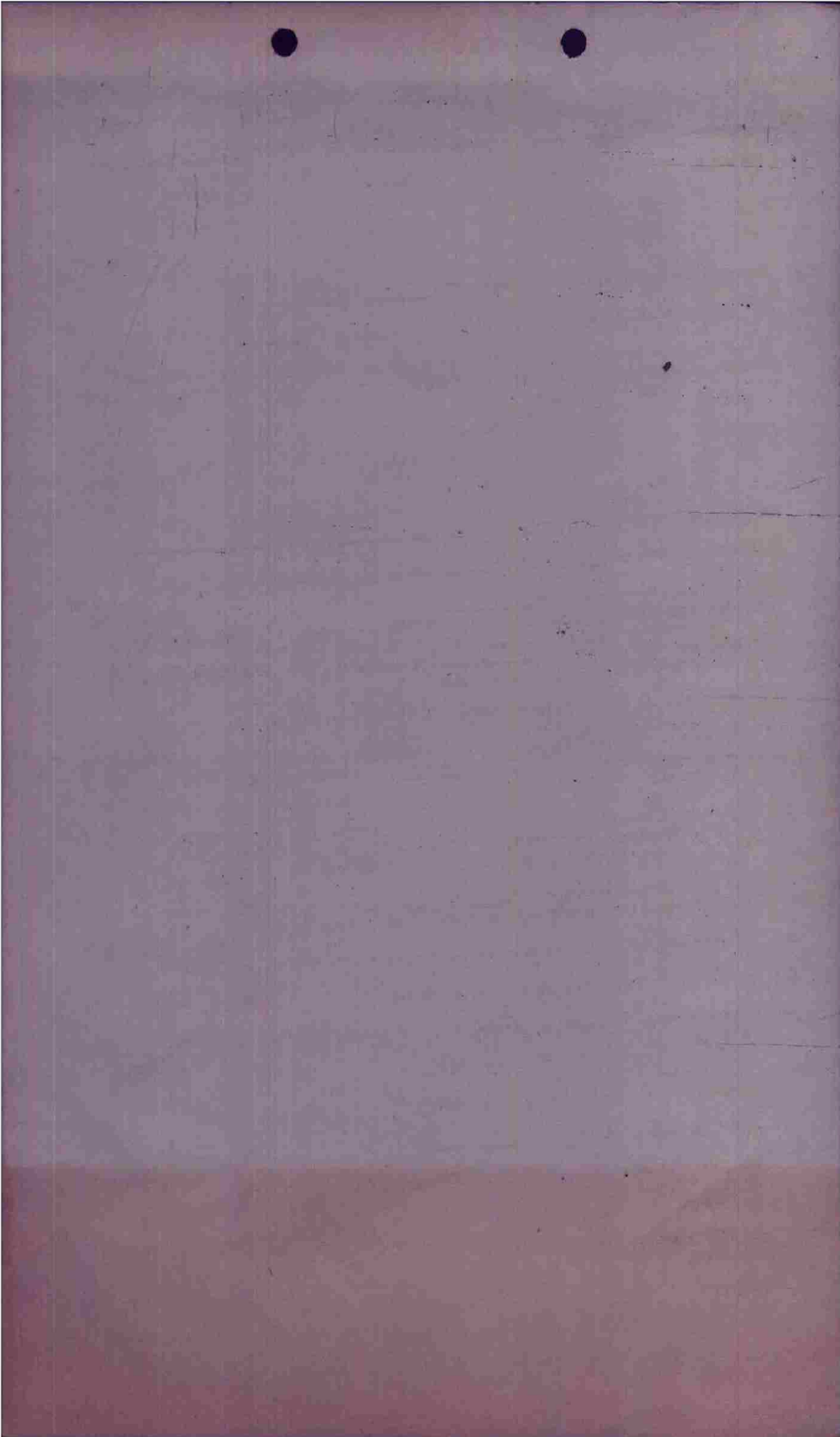
(a) Did weather conditions or visibility adversely affect identification of target attacked or bombing. YES _____ NO X. If "YES" state conditions and effect.(b) Apart from weather or visibility, was any difficulty encountered in identifying target attacked, IP or AP? YES _____ NO X. If answer is "YES", state circumstances and effect on bombing:(c) Did Flak affect bombing? YES _____ NO X. If answer is "YES", state to what extent Flak affected bombing or bomb run:(d) To what extent did attacks by enemy aircraft affect bombing? None(e) State any difficulties on bombing run: None(f) Malfunctions, personnel errors or other factors affecting bombing: None

(g) Bombing results as reported by crews:

Aimed at right Target: YES X NO _____Results claimed: GOOD X FAIR _____ POOR _____ BAD MISS _____

* 1 a/c bomb load 6 x 500 lb GP.

SECRET



MISSION NO. 111

LOADING LIST
BOX NO. I
FLIGHT I

2 AUGUST 1944

- 1. ✓ 439 J
Major W.J. Meng ✓
Lt. V.H. Powell ✓
S/Sgt. R.F. Stobert ✓
S/Sgt. F.P. Glynn ✓
- 2. ✓ 209 K
Lt. R.B. Hall ✓
Sgt. J.F. Goggins ✓
Sgt. R.A. Wolber ✓
- 3. ✓ 759 G
Lt. A.W. Nordstrom ✓
S/Sgt. J.D. Gossett ✓
Sgt. A.H. Hinson ✓

1 returned

- 4. ✓ 227 F
Lt. F.J. Harrold ✓
S/Sgt. O.D. Evans ✓
Sgt. H.G. Wiggins ✓
- 5. ✓ 978 S
Lt. P.P. Barausky ✓
Sgt. M. (NMI) Hall ✓
Sgt. B.R. Wilson ✓
- 6. ✓ 892 L
Lt. J.C. Sewell ✓
Sgt. M.E. Dias ✓
Sgt. H.J. Hummer ✓

w/r

w/r

4 returned w/r

FLIGHT II

- 1. ✓ 719 V
Capt. R.E. Prentiss ✓
Lt. R.T. McBrien ✓
S/Sgt. J.E. McCreery ✓
S/Sgt. H.J. Sylva ✓
- 2. ✓ 894 R
Lt. C.J. Anderson ✓
Sgt. T.G. Euge ✓
Sgt. E.L. Schafer ✓
- 3. ✓ 150 N
Lt. J.K. Colquitt ✓
Sgt. A.F. Galloway ✓
S/Sgt. D.E. Raines ✓

w/r

w/r

w/r

- 4. ✓ 176 T
Lt. G.F. Bartmus ✓
S/Sgt. J.R. Orr ✓
S/Sgt. F.L. Falcks ✓
- 5. ✓ 210 Q
Lt. L.E. Cannon ✓
Sgt. J.W. Robinson ✓
Sgt. E.P. Bruzezinski ✓
- 6. ✓ 819 K-1
Lt. F.W. Harris ✓
S/Sgt. E.A. Damico ✓
Sgt. R.E. Wright ✓

w/r

w/r

w/r

FLIGHT III

- 1. ✓ 1711 S-1
Lt. F.W. DeMand ✓
Lt. R.J. Harlow ✓
S/Sgt. R.J. Troyer ✓
S/Sgt. C.W. Middleton ✓
- 2. ✓ 165 H
Lt. A.E. Herman ✓
S/Sgt. A.D. Garrett ✓
S/Sgt. J.O. Young ✓
- 3. ✓ 956 Z
Lt. T.J. Murray ✓
S/Sgt. D.H. DeBower ✓
S/Sgt. R.J. Jones ✓

6 returned w/r

6 returned w/r

w/r

- 4. ✓ 363 L-1
Lt. A.R. Durante ✓
S/Sgt. H.T. Best ✓
S/Sgt. I.R. DeGiusti ✓
- 5. ✓ 214 C
Lt. C.L. Estes ✓
S/Sgt. C.R. Orvold ✓
S/Sgt. A.E. DiMartino ✓
- 6. ✓ 9719 J-1
Lt. H.F. Fair ✓
S/Sgt. H.E. Marion ✓
S/Sgt. V.P. Adams ✓

4 returned 3 returned

6 returned w/r

- SPARE
- 362 L-2
Lt. E.R. Svenson ✓
S/Sgt. P.C. Fild ✓
S/Sgt. G.H. Pfennig ✓

a

(N)

MISSION NO. 111

LOADING LIST

2 August 1944.

BOX II
FLIGHT I

- 1. ✓ 058 C
Captain C.R. Jackson ✓
Lt. A.H. Maltby ✓
S/Sgt. R.L. Miller ✓
S/S D.S. Blackford ✓
387 H
- 2. ✓ Lt. C.L. McGlohn ✓
S/S J.W. Moran ✓
S/S D.A. Sampson ✓
- 3. ✓ 200 A
Lt. J.P. Hillerman ✓
Sgt. E.F. Paules ✓
Sgt. L. Martinez ✓

- 4. ✓ 217 D
Lt. P.G. Atkinson ✓
S/S H.E. White ✓
S/S R.F. Addleman ✓
- 5. ✓ 380 N
Lt. J.R. Sparling ✓
Sgt. C.L. Shaw ✓
Sgt. L.L. Leahigh ✓
- 6. ✓ 750 M
Lt. L.R. McBride ✓
S/S J. McKee ✓
S/S R. Eutsler ✓

FLIGHT II

- 1. ✓ 135 T
Captain M.J. Huff ✓
Lt. J. Kupits ✓
Sgt. R.A. Clark ✓
Sgt. F.P. Basford ✓
- 2. ✓ 147 K
Lt. D.W. Elliott ✓
Sgt. J. Mani ✓
Sgt. J.J. McGuire ✓
- 3. ✓ 202 B
Lt. J.E. Blomgren ✓
Sgt. M. Bookach ✓
Sgt. L.R. Fleming ✓

- 4. ✓ 929 C-1
Lt. J.S. Connor ✓
S/S J.E. Van Duyne ✓
S/S H.C. Rogers ✓
- 5. ✓ 1961 P
Lt. A.J. Vleghels ✓
S/S R.W. Rice ✓
S/S C.E. Young ✓
- 6. ✓ 943 F
Lt. E.J. Renth ✓
S/S O.D. LaNave ✓
Pvt. L. Moskiwicz ✓

FLIGHT III

- 1. ✓ 442 D-1
Lt. R.J. Morton ✓
Lt. D.F. Moore ✓
S/Sgt. G.L. Webb ✓
S/Sgt. F.M. Citty ✓
- 2. ✓ 181 A-1
Lt. W.H. Land ✓
S/Sgt. R.W. Carstens ✓
Sgt. R.P. Sharpe ✓
- 3. ✓ 900 Q
Lt. J.F. Allen ✓
Sgt. L.R. Getgen ✓
Sgt. C.W. Veazey ✓

- 4. ✓ 390 G
Lt. W.C. Siggs ✓
S/Sgt. R.W. Nicks ✓
S/Sgt. N. Radlich ✓
- 5. ✓ 743 W
Lt. R.B. Robertson ✓
Sgt. J.E. Hay ✓
Sgt. J.A. Buskirk ✓
- 6. ✓ 376 O
Lt. W.F. Tripp ✓
S/Sgt. J.O. Scott ✓
S/Sgt. D.F. Mallory ✓

SPARE

- 493 V
Lt. R.C. Morehouse ✓
S/Sgt. L.A. Zygiel ✓
S/Sgt. A.J. A .J. Burgess ✓

(7)

MISSION NO. 111

LOADING LIST
WINDOW MISSION

AUGUST 1944

1. 1717 P
LT R F SHAEFER ✓
LT W M LITTLE ✓
a SGT F W ELLIOTT ✓
SGT F NOTERIANI

2. 907 O
LT G KREINSTEIN ✓
a SGT J H ROBERTS
S/S S P NEWELL

3. 220 E
D LT R D PERKINS ✓
S/S V N SHERRY
S/S R H LINNEMAN

MISSION NO. 111
WINDOW MISSION
2 AUGUST 1944

(5)

OPERATIONAL PRIORITY

FROM: 416TH BOMB GROUP (L)

TO : IX BOMBER COMMAND

TO: 97TH COMBAT WING

SECRET IN THE CLEAR

416 BG A _____ E

"J" FORM OPERATIONAL CLEARANCE P-1 2 AUGUST 1944

PREPARED BY MAJOR HAROLD A. RADETSKY

A.

B. 1713

C. SELSEY BILL

D. BOX I R/T LATEWORK ONE

670 6 J K G F L S

668 6 V R N T Q K-1

671 6 S-1 H Z L-1 G J-1

668 1 (SPARE) L-2

GROUP LEADER 670 J

DEPUTY 668 V

BOX II R/T LATEWORK TWO

670 6 C H A D H H

669 12 T K B C-1 P F D-1 A-1 Q G W O

671 1 (SPARE) V

SECOND BOX LEADER 670 G

DEPUTY 669 T

BOX III R/T LATEWORK THREE

668 2 P O

671 1 E

FLIGHT LEADER 668 P

E. 12,000

F. FECAMP

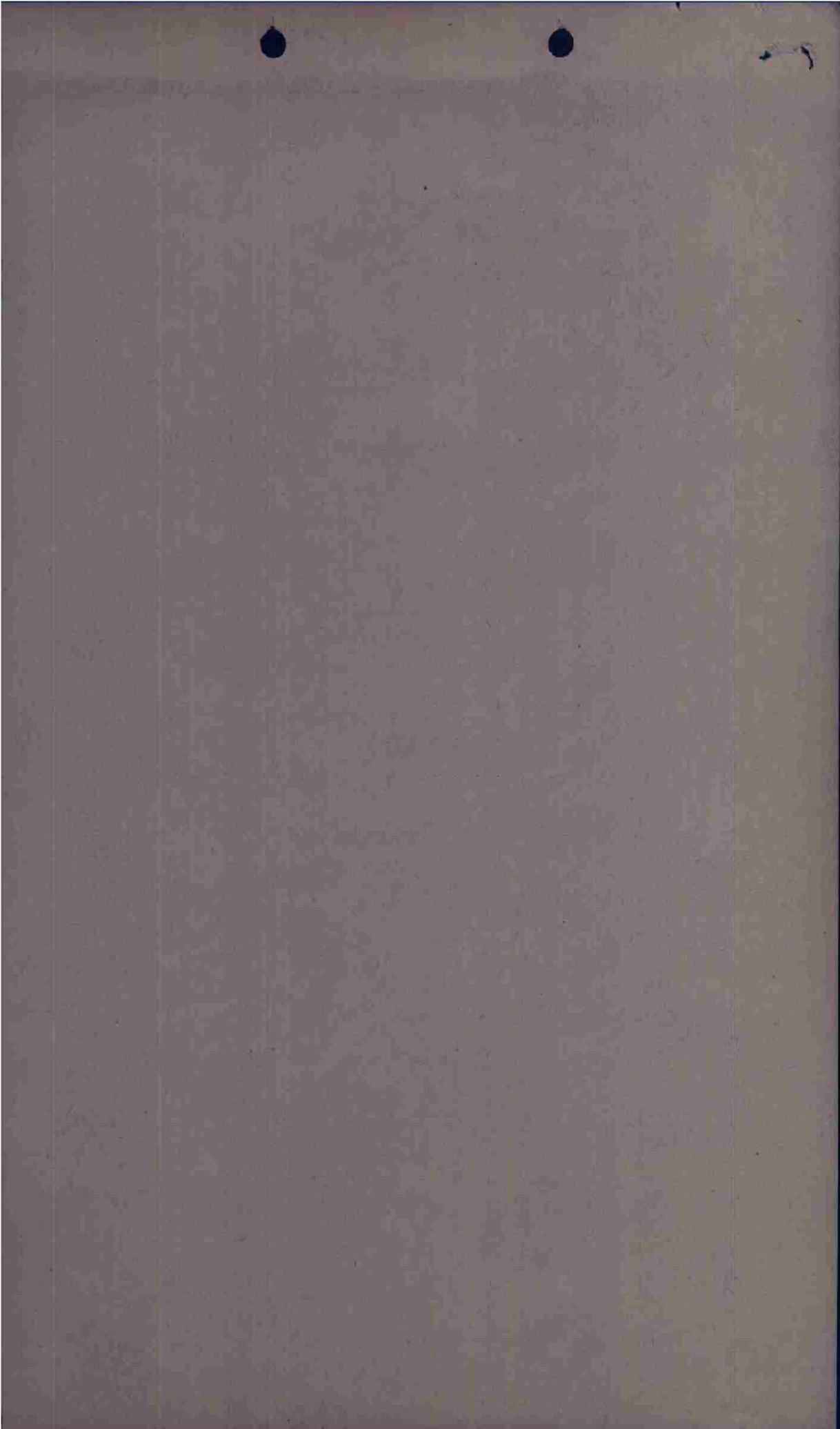
G. 1735

H. 12 MINUTES

J. VEULETTE

K. SELSEY BILL

L. 1807

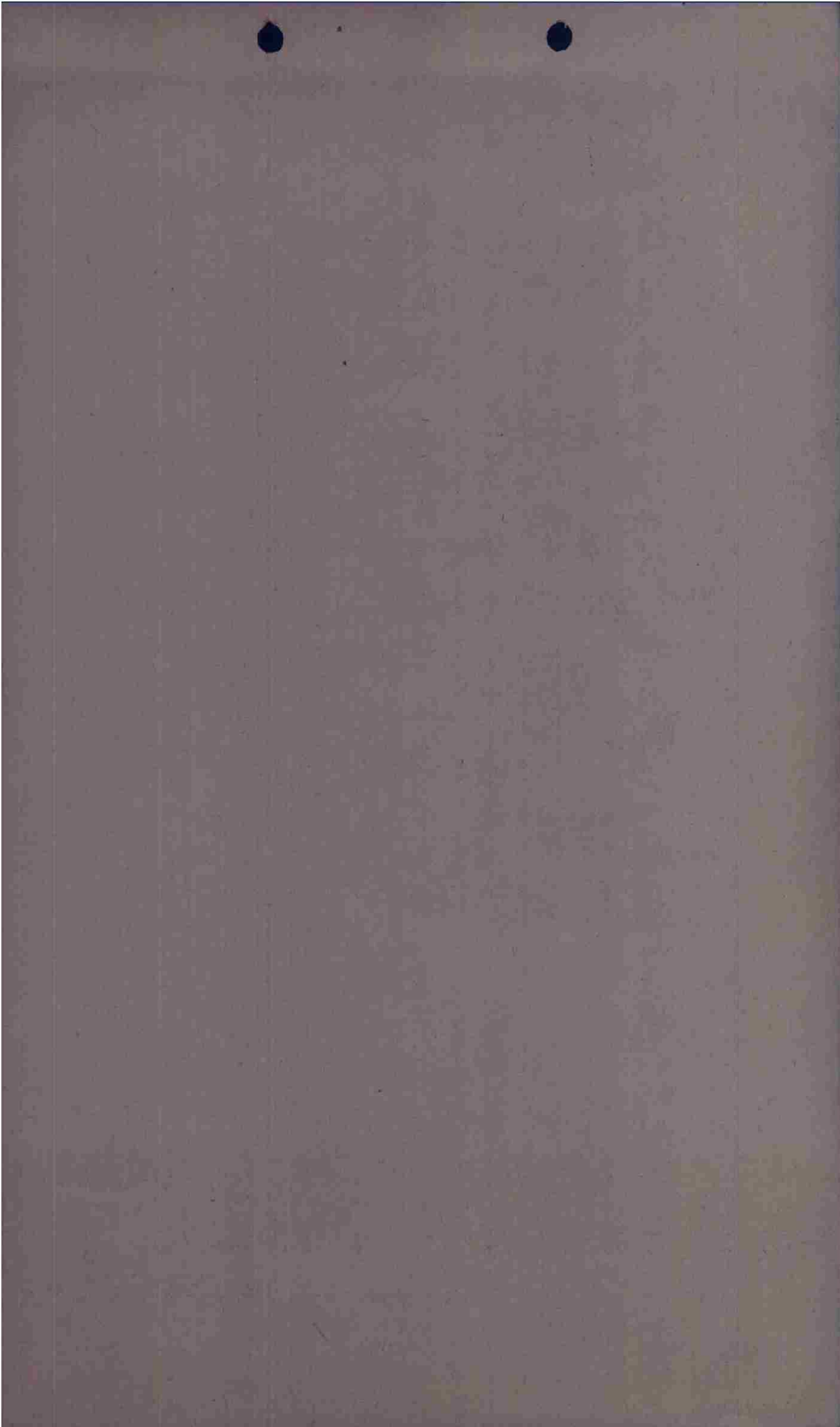


- N. 1. T.O. . . . 1610 . . . E.T.D. . . . 1643 . . . E.T.A. . . 1937
2. 6 x 500 G.P.
3. 4 HOURS
4. BOX I 4900/38
BOX II 4900/38
BOX III 4900/38
5. NONE

MACE 00BOMBGR416

I certify that this is official business:

JOHN M. BONURA,
1st Lt., A&F Corps
Ops. Stat. Officer.



CONFIDENTIAL

HEADQUARTERS
416th BOMB GROUP (L)
OFFICE OF THE WEATHER OFFICER

APO 140
2 August 1944

SUBJECT: Interrogation Report

TO : Staff Weather Officer, Headquarters IX
Bomber Command, APO 140, U.S. Army.

BASE AT TAKEOFF: 6/10 stratocumulus at 3000 feet.
Visibility 4 miles.

ROUTE OUT: 4-5/10 stratocumulus over England with
bases 3000 feet and tops to 3000. Over
the channel the clouds decreased to 1-2/10.
At the French coast the stratocumulus
increased to 6-7/10 with tops to 4000 feet.
Clouds broke a few miles inland to 3-4/10.
Visibility 6 miles over England increasing
to 8 over channel and 9-10 miles over
France.

TARGET: 3-4/10 Stratocumulus with tops estimated to
4000 feet. Visibility 9-10 miles.

ROUTE BACK: Same as route out except a few miles south
of base the stratocumulus increased to and
overcast with breaks with the base at 2000
feet.

BASE ON RETURN: Ov. coast with breaks at 2000 feet with
occasional patches to 1500 feet.
Visibility 4 miles.

TIME OVER TARGET: 1741

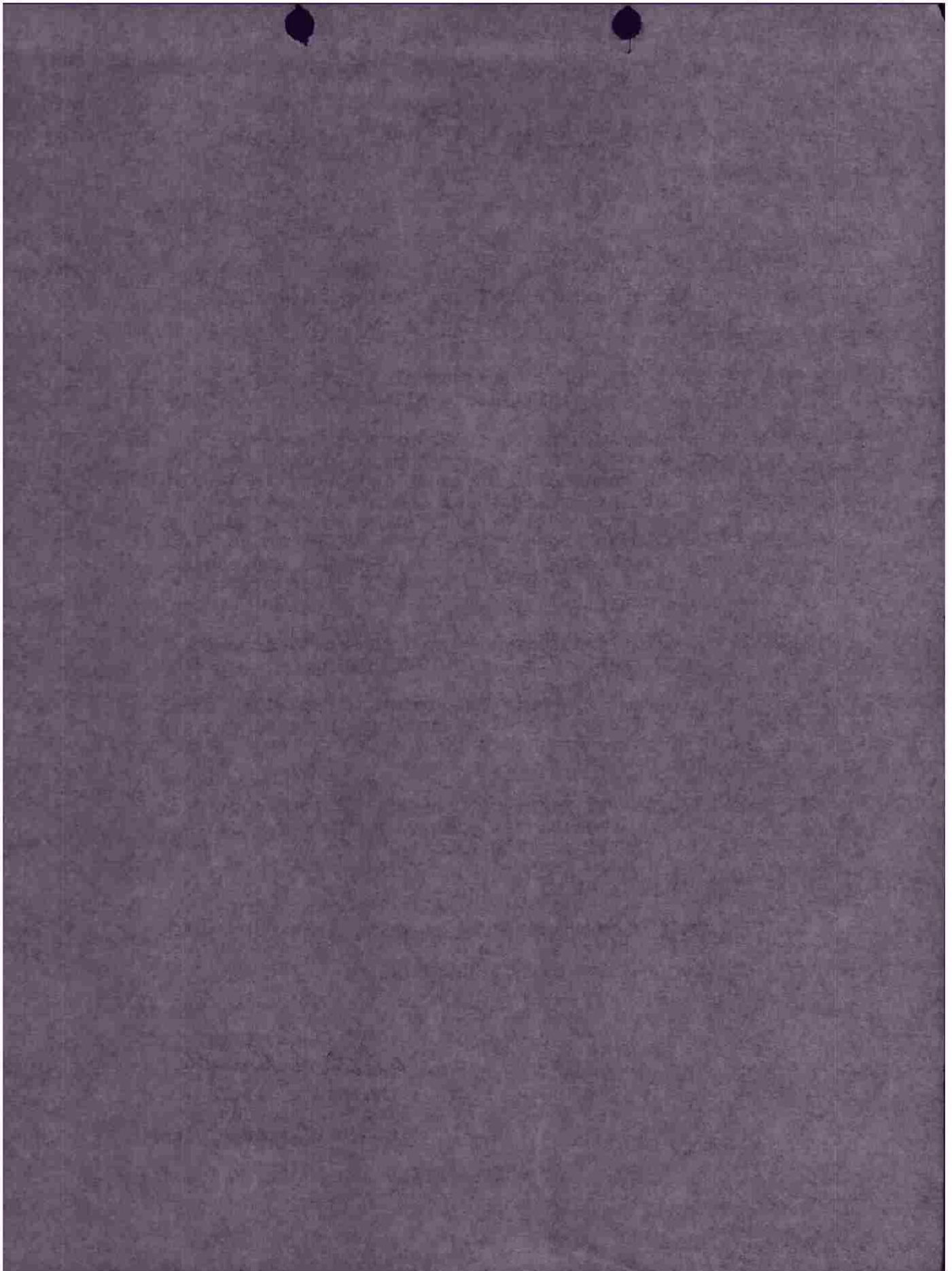
WINDS: Winds were reported as stronger than forecast.

Weather did not affect bombing.

Walter D. Castle

Walter D. Castle
1st Lt. Air Corps
Staff Weather Officer

CONFIDENTIAL



C O N F I D E N T I A L

FROM: COBOMGR 416

TO : COCBWIG 97 ATT: SIG O

A - YS - 111

B - 2 AUG 1944

C - 36 A/C

D - NONE

E - TWO QDM(S) FROM BOATDECK. LOCAL BUNCHER BEACON USED.

F - NONE.

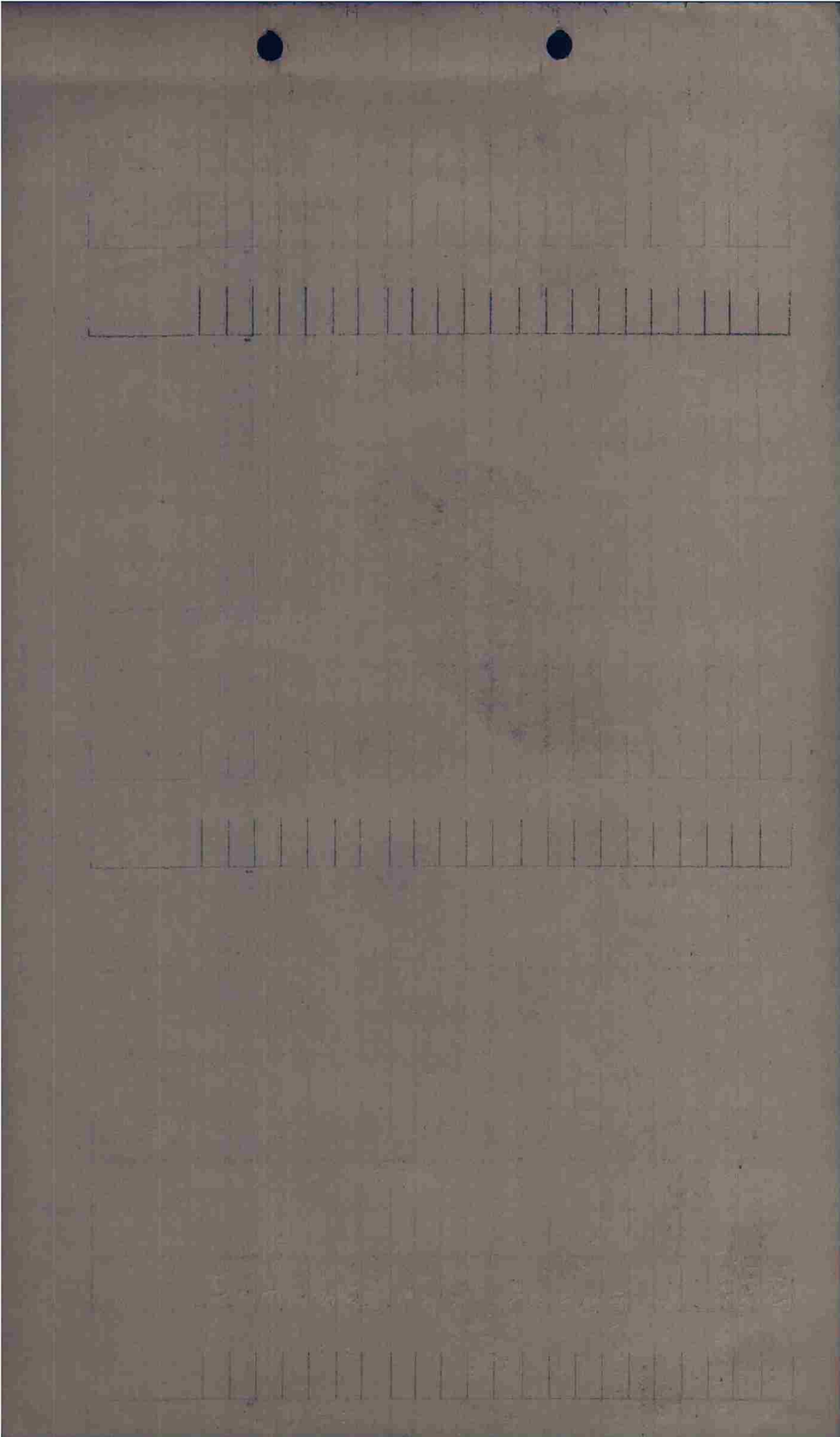
MACE COBOMGR 416

OFFICIAL:

JACK B. GOONEY
CAPT, AIR CORPS,
SIGNAL OFFICER

2 AUGUST 1944
MISSION NO. 111
BOX I

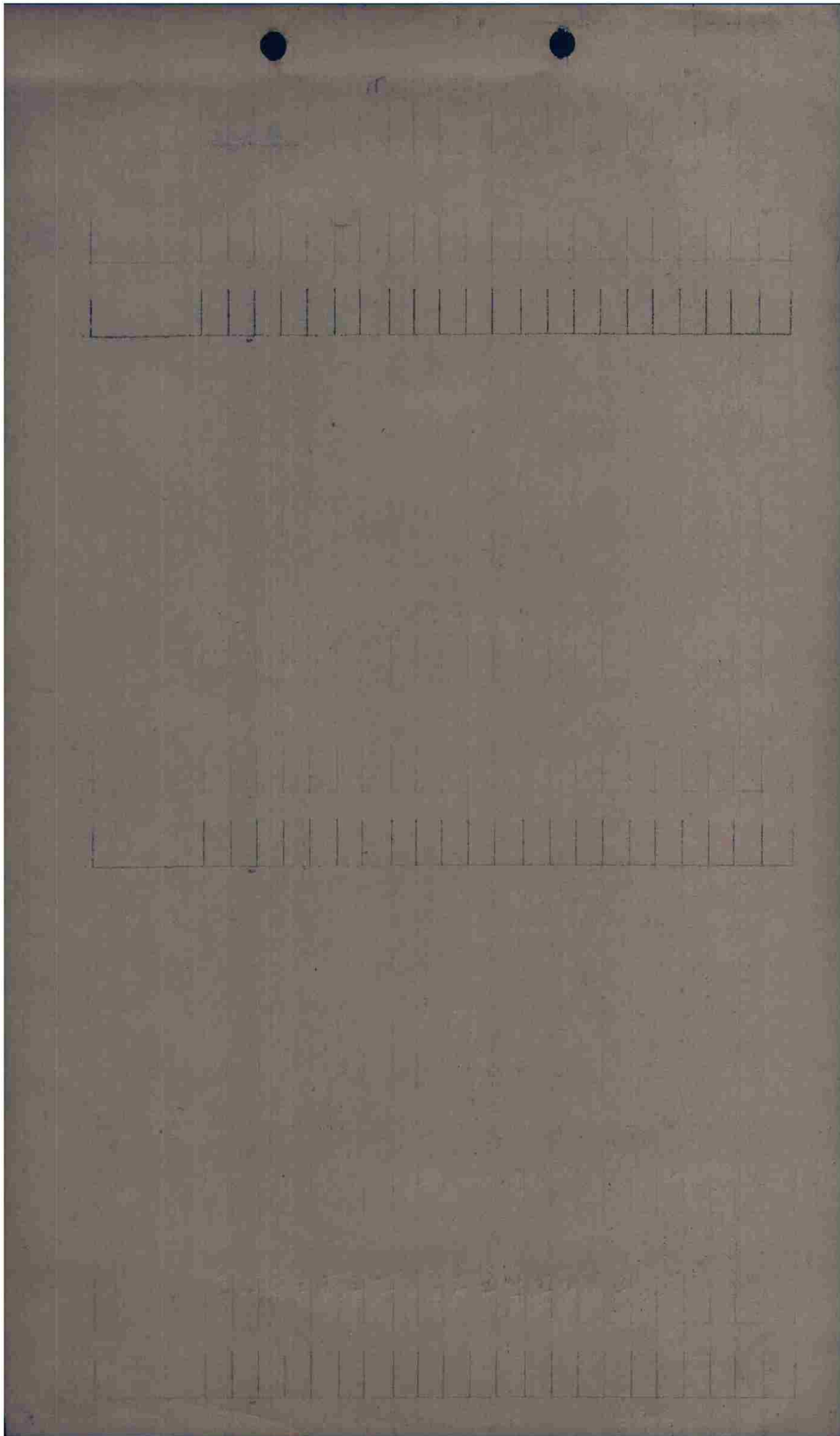
S Q D M	A / C LTR	A / C NO.	PILOT	D I S T A N C E	TARGET	A T O	ENG. COAST OUT	ENEMY COAST IN	T O T	ENEMY COAST OUT	ENG. COAST IN	C A M E R A	F U L L O A D	B O M B A D	E N D U R	L A T I T U D E	R E M A R K S
C	J	489	Young	451		1609	12000	13000	1741	13000	9000	HC	725	5000	4	1901	
C	K	209	Red Hill			1609	1713	1735	1747	1747	1807	C				1902	
C	G	759	Hardstone			1609	Being	Being								1901	
C	F	227	Parrell			1609	Beil									1902	
C	S	978	Brancoy			1610										1903	
C	L	792	Smull			1610										1903	
A	V	719	Prentiss			1610										1907	
A	R	894	Anderson			1610										1908	
A	N	150	Agnew			1611										1908	
A	T	176	Baltman			1611										1909	
A	Q	210	Cannon			1611										1909	
A	K	819	Sherris			1611										1909	
P	S-1	1711	De Grand			1612										1905	
P	H	165	Herman			1612										1907	
P	Z	956	Murray			1613										1905	
P	L-1	363	Furbush			1613										1906	
P	C	214	Pate			1613										1906	
P	J-1	9719	Poir			1613										1908	
A	L-2	862	Lawson			1614										1912	
A	P	1717	Hooper			1620										1856	
A	O	907	Chapman			1620										1856	
P	E	220	Parsons			1620										1857	



2 AUGUST 1944
MISSION NO. 111
BOX II

S Q D M	A / C LTR	A / C NO.	PILOT	D I S T A N C E	TARGET	A T O	ENG. COAST OUT	ENEMY COAST IN	T O T	ENEMY COAST OUT	ENG. COAST IN	C A M E R A	F U L L O A D	B O M B O A D	E N D U R	L A T I T U D E	R E M A R K S
C	C	058	Jackson	451		1615						C	725	1500	4	1912	
C	H	387	Gene Altman			1615										1913	
C	H	200	William			1615										1913	
C	D	217	Atkinson			1615										1914	
C	N	350	Sparking			1616										1914	
C	M	750	Gene Bilde			1616						C				1914	
B	T	135	Thyl			1616										1914	
B	K	147	Elliot			1618										1914	
B	B	202	Blomgren			1617										1916	
B	C-1	929	Probert			1617										1919	
B	F	1961	Vegulas			1617										1921	
B	F	943	Penick			1618						C				1921	
B	D-1	442	Proctor			1618										1921	
B	A-1	181	Land			1616										1920	
B	Q	900	Allen			1618						HC				1916	
B	G	390	Anger			1619										1917	
B	W	743	Robertson			1619										1917	
B	O	376	Wicks			1619										1917	
D	V	492	Mohrman			1620										1922	

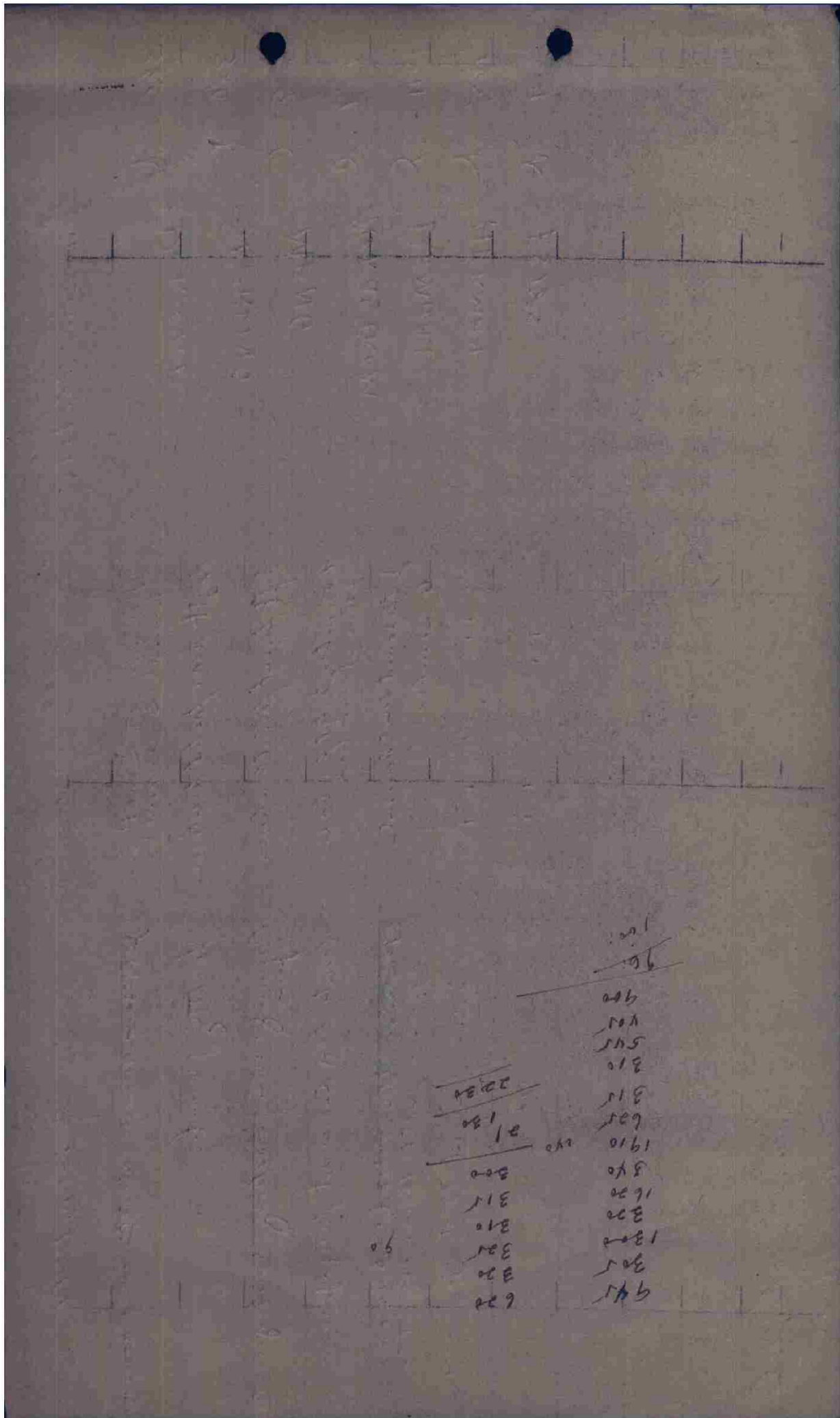
Several empty on Buigful - no data



2 Aug 1944

SHIP NO	SQUADRON	PILOT and/or BOMBIER	GRADE	FUNCTIONS	CAUSE OF MALFUNCTIONS
363	A	DORRANCE		1 Bomb 18 High and 18 Low	jetting in accordance with manual
380	A	SPARLING		Right hand fuel tank	fuel tank empty
939	A	MENG	✓	Left hand fuel tank	damaged while descending - fuel tank empty
759	A	NERDSTROM	✓	4 bombs pulled from bomb bay	Bomb bay door not fully open
1911	B	DEMEND	✓	jetted in channel C	Bomb bay pulled 20 lbs bomb bay door with bomb bay
165	B	HEKMAN	✓	" "	door failed to drop over target
914	B	ESTES		" "	" "

*William C. McClanahan
Capt. U.S.C.
Commanding Officer*



		2284		941
		130		191
		21		1910
		208	240	1620
		311		320
		018		1300
		321		305
		22		941
		229		

OICOG OYHAK OIGOF OYAA V OILAI OILAI 05/02 -OP-

FROM 97TH COMBAT BOMB WING 02/1330B A-14-E
 TO COMBOMCOMC IX
 409TH BOMB GROUP (INFO)
 416TH BOMB GROUP
 416TH BOMB GROUP

OPERATIONAL PRIORITY BT
 SECRET SEND IN THE CLEAR AUTH: LT. COL. MC AFEE

97TH COMBAT BOMB WING
 A-P-O-140
 02 AUGUST 44

FIELD ORDER NO. 158-462

MAPS - NORMAL

1. B. (2) 9 TAC WILL FURNISH ESCORT FOR THIS WING.
2. THIS WING WILL ATTACK TARGETS IN FRANCE

ZERO HOUR: 02/1600B

3. A. 416TH BOMB GROUP

- (1) 4801E/B/29 ALTERNATE TARGET, LAIGLE
- (2) 36 BOMBING BY FLIGHTS OF 6
- (3) WITH FIGHTERS AT 4919N 0000 AT 12,000 FT. AT ZERO PLUS 70 MIN.
- (4) BASE TO MAIDENHEAD TO SELSEY BILL TO 4919N 0000 TO I.P. TO TARGET
- (5) TARGET TURN RIGHT TO R.P. AND RETRACE ROUTE.
- (6) BOMB AT 12,000 FT. OR BELOW OVERCAST TO BUT NOT BELOW 10,000 FT. LEAVE FRENCH COAST AT BOMBING ALT.
- (7) 4827N 0100E
- (8) GEN. W TO E
- (9) M.P.I. ILL. 4801E/47 REF. 049099 ALTERNATE ILL. 4800/53 REF. 021070 AND 028067
- (10) 4 X 500 G.P. FUSED 1/10 SEC. NOSE 1/100 SEC. TAIL
- (11) 4827N 0100E
- (12) GROUP IS AUTHORIZED TO PICK SUITABLE ALTERNATE TARGETS. IF ALTERNATE TARGETS ARE SELECTED BY THE GROUP A SUITABLE M.P.I. WILL ALSO BE SELECTED.

V

B. 416TH BOMB GROUP

- (1) CAUDEBECK ILL. 4900/38
- (2) 36 BOMBING BY FLIGHTS OF 6
- (3) WITH FIGHTERS AT 4945N 0022E AT 12,000 FEET AT ZERO PLUS 95 MIN.
- (4) BASE TO MAIDEN HEAD TO SELSEY BILL TO 4945N 0022E TO I.P. TO TARGET
- (5) TARGET TO R.P. TO SELSEY BILL TO MAIDEN HEAD TO BASE
- (6) BOMB 12,000 FEET OR BELOW CLOUD BASE DOWN TO BUT NOT BELOW 10,000 FEET. LEAVE FRENCH COAST AT BOMBING ALTITUDE
- (7) 4938N 0022E
- (8) GEN NW TO SE
- (9) M.P.I. ILL. 4900/38 REF. 112053
- (10) 6 X 500 G.P. FUSED 1/10 SEC. NOSE 1/100 SEC. TAIL
- (11) 4947N 0039E
- BT (12) NO ALTERNATE TARGET WILL BE BOMBED ON THIS MISSION

X. (1) TO (4) NO CHANGE

4. NO CHANGE

A. 410TH BOMB GROUP
(2) MOTHER
(3) HEADUP

B. 414TH BOMB GROUP
(2) LATEWORK
(3) POKER

X. GENERAL INFORMATION

(10) ADVT/ADVT

(11) BOX LEADERS WILL REPORT TO COMMAND CONTROL ON CHANNEL "C"
WHEN CLEARING TARGET AREA

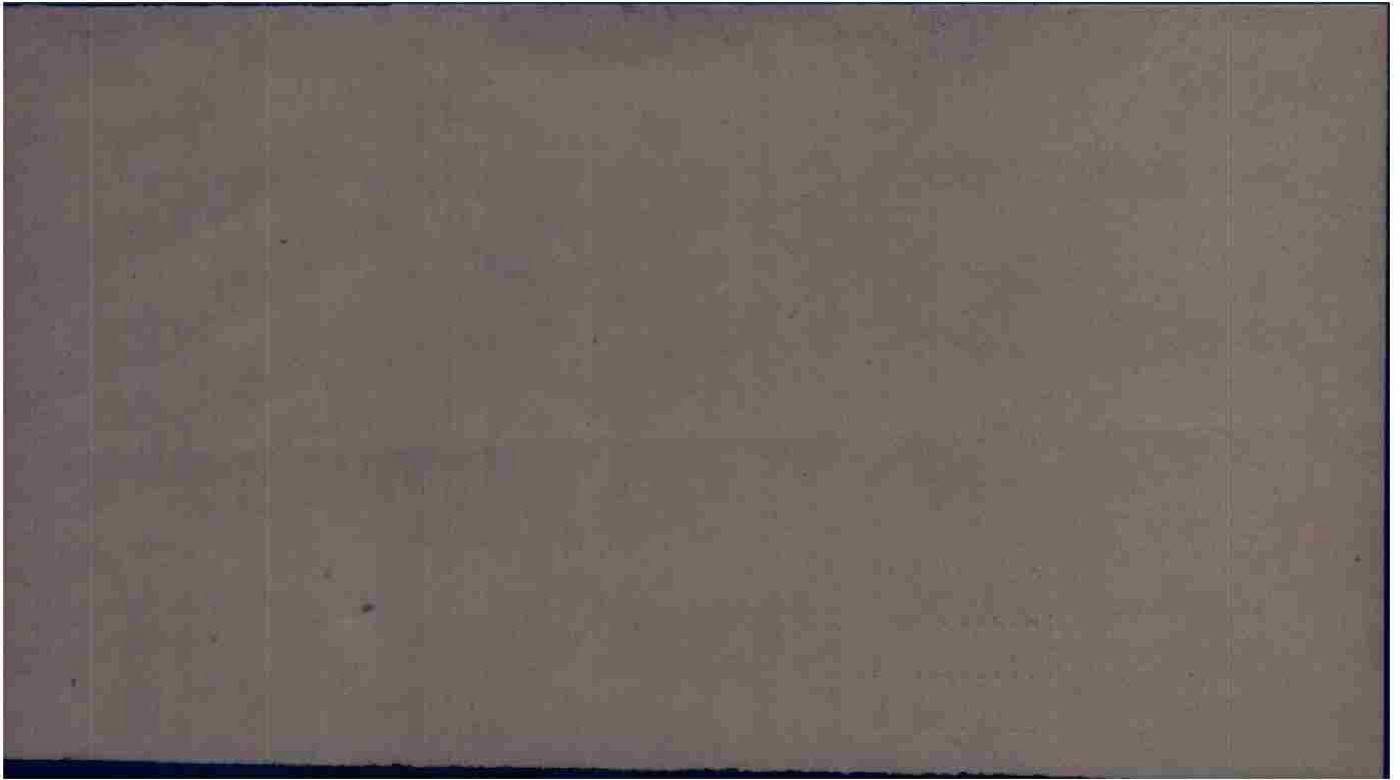
COCBTWIG 97

BT 01/1330B
RRR/LCB AR

OIHAK OILAI R.....02/1535	EJK	AR
OIVAA OILAI R.....02/1530B	RSS	AR
OIGOF OILAI R.....02/1535B	SK	AR
OICOG OILAI R.....02/1532	WV	AR

TV

THIS PAGE DECLASSIFIED IAW EO12958



THIS PAGE DECLASSIFIED IAW EO12958

GIAOC OILAI V YAA YAA 15/82 GP
 FROM 416TH BOMB GROU P KL) 2/2146B AA7D

TO HQ IX BOMBER COMMAND
 HQ 97TH COMBAT WING
 ATTENTION A-2

QZX BR
 OPFLASH NO 112 FOR 2 AUGUST 1944

- A. (1) CAUDEBEC ANMO DUMP
 (2) CAUDEBEC ANMO DUMP
- B (1) 416TH BG
 (2) 7 A20-J'S AND 32 A20-G'S
 (3) 3 A/C CARRIED WINDOW ONLY
 6 A/C THIRD FLIGHT FIRST BOX. DUE TO MALFUNCTION OF BOMB SIGHT RELEASE MECHANISM LEADER DID NOT DROP. ONE BOMB FELL OUT OF ANOTHER A/C IN THIS FLIGHT WHEN HIT BY FLAK ON BOMB RUN. 2 OTHER A/C IN THIS FLIGHT DROPPED ON THE ACCIDENTAL RELEASE. REMAINING 2 A/C THIS FLIGHT DID NOT BOMB BECAUSE LEADER DID NOT.
 (4) 29 A/C ON PRIMARY. INFORMATION LACKING FROM ONE A/C CRASH-LANDED AT FORD IN ~~V/VVA~~ U.K.
- C (1) 1639
 (2) 1741 - 1744
 (3) 1921
- D ONE A/C CRASHLANDED SAFE AT FORD IN U.K. ON RETURN FR MISSION
 5 A/C DAMAGED BY FLAK CATEGORY "A"
 4 A/C DAMAGED BY ELAK CATEGORY "AC"
- D GOOD RESULTS BY FIVE FLIGHTS WHICH BOMBED.
- F (1) (A) NIL
 (B) NIL
 (2) (A) MODERATE ACCURATE HPF FROM WOODED AREA NEAR TARGET
 (B) NIL
- G 2 39-CAR TRAINS IN M/Y EAST OF DANLIVILLE (L-9254)
 40 TO 50 CARS IN M/Y AT ~~WETZEVYK~~ WOTTIVILLE (M-8438)
 TROOPS AND VEHICLES MOVING EASTWARD AWAY FROM YVETOT (L-9637)
 TOWARD ROAD JUNCTION AT (M-8438)
 FRESH EXCAVATIONS ON BOTH SIDES OF LINE OF MARCH.
- H (1) 3/10 TO 4/10 LOW CLOUDS BASES AT 2000' TOPS 4000' VISIBILITY
 6 TO 8 MILES.
 (2) 2/10 TO 3/10 OVER CHANNEL - LOW CLOUDS BETWEEN 2000 TO 4000'
 INCREASING TO 6/10 AT FRENCH COAST AND TOWARD TARGET AREA.
- I 126 X 500 GP ON PRIMARY
 9 X 500 GP RETURNED
 11 X 500 GP ON BOMB RUN AT UNDETERMINED POINT
 16 X 500 GP JETTISONED IN CHANNEL
- J 12000 - 11500'

MACE COBOMGR 416

BT 022146B
 AS AS

CC: PARAGRAPH FOLLOWING D SHOULD BE "E" INSTEAD OF D AS SENT

GICCC R. . . . 02/2214B BCD AR
 OILAI R. . . . 02/2214B CES AA

