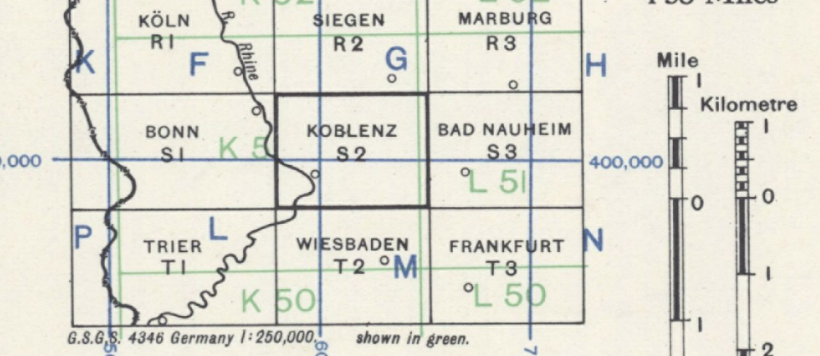


KOBLENZ

REFERENCE

- Red classification is NOT based on reconnaissance. Reliability uncertain.*
- Motor Highway (Independent of road system) Reichsautobahn.
2 carriage ways each metalled and 7.5m. wide.
Connecting points with road system where known.
Under construction.
 - Main Roads. Reichstrassen with route numbers
Metalled and mostly firm.
Other Main Roads (mostly Landstrassen). Ordnung metalled
and 5.5m. average useful width.
 - Secondary Roads. Metalled and firm, average useful width
Other Roads and Cart Tracks. Not always metalled and often
unmetalled.
 - Paths.
Causeway.
Single track (normal gauge) with station.
Under construction.
Single track broad gauge, tram track.
International Boundary.
Narrow gauge, tram track.
 - Church, Chapel, Monument.
Cemetery, Christian, and non Christian.
Wireless station, Tower, Lighthouse.
High Tension cable and Power Station.
Watermill, Windmill, Windmotor.
Lock, Water gate, Dam.
Aqueduct, over and underground.
Spring. Water cistern.
Swamp, Mud flats.
Contours. Spot height. Trigonometrical point.
Woods, Brushwood.
Vineyard, Orchard.
Embankment, Old earthworks, Barrer.

INDEX TO ADJOINING SHEETS AND
INCIDENCE OF GRID LETTERS.



- ### GERMAN GLOSSARY
- | | | | | | |
|---------------------|--------------|--------|------------|---------------|---------------|
| Abhang | Slope | Alte | Old | Hilf | Hill |
| Acker | Field | Alte | Old | Insel | Island |
| Bach | Stream | Bahn | Rail | Kalkofen | Lime Kiln |
| Baum | Tree | Becken | Basin | Kalkstein | Lime Stone |
| Berg | Mountain | Bed | Bed | Landungsplatz | Landing Place |
| Birge | Birch | Beile | Beam | Leuch | Light |
| Bruck | Bridge | Beruf | Profession | Loch | Loch |
| Bruch | Marsh, Swamp | Bier | Beer | Moor | Moor |
| Br. Brunnen | Well | Bohle | Plank | Morast | Bog, Swamp |
| Bühel | Hillside | Bohle | Plank | Ndr. | North |
| Dr. Dorf | Village | Bogen | Bow | Ob. Ober | Upper |
| Ebene | Plain | Bohle | Plank | Ob. Ober | Upper |
| Fab. Fabrik | Factory | Bohle | Plank | Ob. Ober | Upper |
| Fe. Fabrik | Iron Works | Bohle | Plank | Ob. Ober | Upper |
| F. F. (Wagenfabrik) | Wagon Works | Bohle | Plank | Ob. Ober | Upper |
| F. F. (Fabrik) | Factory | Bohle | Plank | Ob. Ober | Upper |
| F. F. (Wagenfabrik) | Wagon Works | Bohle | Plank | Ob. Ober | Upper |
| F. F. (Fabrik) | Factory | Bohle | Plank | Ob. Ober | Upper |
| F. F. (Wagenfabrik) | Wagon Works | Bohle | Plank | Ob. Ober | Upper |
| F. F. (Fabrik) | Factory | Bohle | Plank | Ob. Ober | Upper |
| F. F. (Wagenfabrik) | Wagon Works | Bohle | Plank | Ob. Ober | Upper |
| F. F. (Fabrik) | Factory | Bohle | Plank | Ob. Ober | Upper |
| F. F. (Wagenfabrik) | Wagon Works | Bohle | Plank | Ob. Ober | Upper |
- Names of topographical features, e.g. Wald, are given on this sheet in their German form and no attempt is made to translate them into English.*
- Convergence is given for centre of W. & E. sheet lines.
- Magnetic Declination 1944
From True North of G. (Jan. 1944)
From Grid North 0° 00' W.
- T. N. G. N. C. 0° 18' W.

GRID DATA

Projection Lambert (Modified)
Spheroid Conical Orthographic
Origin 55° 45' 00" N. 6° 00' 00" E. of Paris
False Coordinates 300,000 metres N.

COMPILED DIAGRAM

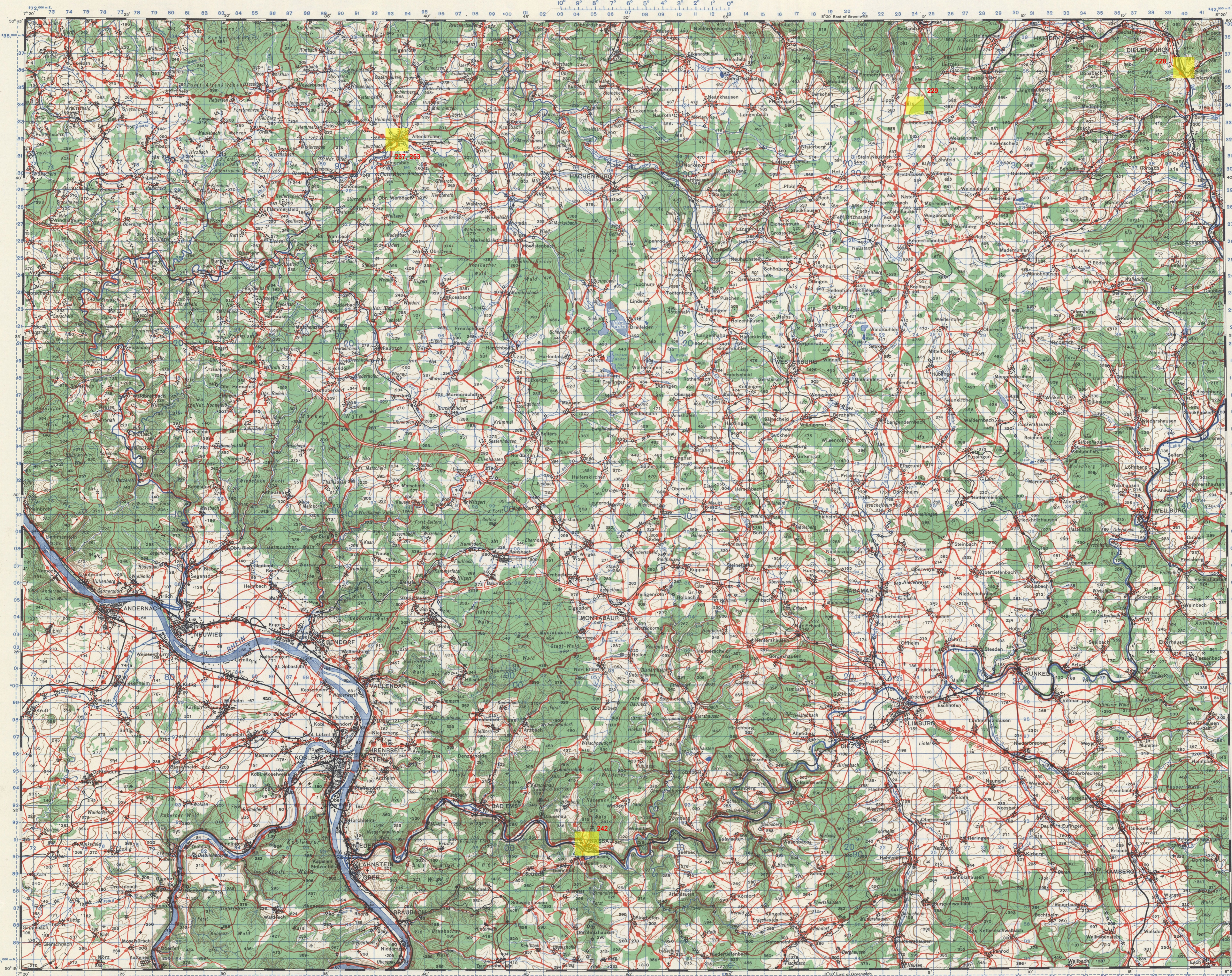
Year	10	11	12	13	14	15
52	1928	1934	1936	1933	1933	1935
53	1935	1935	1934	1933	1933	1933
54	1935	1934	1935	1936	1935	1936
55	1935	1934	1936	1936	1936	1936
56	1935	1936	1936	1935	1934	1936
57	1935	1936	1936	1936	1934	1935

Authors
German 1:100,000 Sheet No. 446 (B) 1937
1:25,000 Sheets 2720-28, 2520-25, 2420-24, 2320-23, 2220-22, 2120-21
For data and sheet numbers of 1:25,000 Sheets see Compilation Diagram

Railway Classification from German 1:100,000 Railway Map 1937
Road Classification from U.S.G.S. 446A
B.Z. Auto-Karte 1:250,000

Area shown shaded revised from air photographs

Revised, drawn and photolithographed at O.S. 1944.



NOT TO BE SOLD
REMOVED OR REPRODUCED

G 6030 5100 MC 55F sheet S2