

**IRIS Public Record**

**Key Information**

Main: GROUP/0416/BOMBARDMENT (LIGHT)

Document Type:  
 Call Number: **GP-416-SU-OP-S**  
 IRIS Number: **00091883**

Revd:	Rel	<b>1985/03/05</b>
Indexer ID: 24	Entered Date:	
QC ID:	QC'd Date::	
Scanner ID:	Scanned Date:	
Acc ID	Acc Date:	

Accessions Notes:  
 Old Accession Nbr:

Title:  
 Beginning Date:  
 End Date:  
 Publication Date: **1944/06/15**

Classification **UNCLAS**

**Media** Roll #: **0000001709** First Frame: **4** Last Frame: **361** Linear Feet: **0**  
 Old MFlm Roll # **B0530** Audio Rec:

NUMPAGE **357**

Title Extensions:

**Abstract** CONTAINS TARGET DATA AND INTERROGATION REPORT.

**Descriptive**  
 Notes:

**Title** MISSION REPORTS

**Added**  
**Entries**

**Author:**  
**Subject:**

Major Command:

**Administrative Markings**

No Administrative Markings Listed

Security Review Information:



MISSION NO. 89

LOADING LIST

4 July 1944

BOX I  
FLIGHT I

*Part 1*  
1. 640 Z  
Lt. A.E. Osborne ✓  
Lt. W. Form ✓ *H\**  
S/S E.E. Kelly  
S/S W.H. Cce

3. 195 D  
Lt. Col. W.W. Farmer ✓  
S/S F.E. Cherry ✓  
Sgt. F. Elliott ✓

2. 717 P  
Captain G.M. McNulty ✓  
Lt. F.H. Hursiel ✓  
S/S R.A. Wolber  
Sgt. S.P. Newell

4. 745 I  
Lt. R.D. Leher ✓  
S/S E.S. Dickenson (4)  
S/S F.E. Hornbeck

FLIGHT II

1. 211 O  
Lt. W.J. Greene ✓ *w/r*  
S/S J.A. Cochran ✓  
S/S W.F. Colbert

3. 680 R  
Lt. D.G. Grunig ✓ (4)  
Sgt. M.E. Diaz  
Sgt. H.J. Nowosielski

2. 227 F  
Lt. A.W. Nordstrom ✓  
S/S J.D. Gosssett  
S/S R.L. Miller

4. 387 H  
Lt. C.L. McGlohn ✓  
S/S J.W. Moran  
S/S P.B. Driskill

FLIGHT III

1. 224 E  
Lt. H.A. Monroe ✓  
S/S W.L. Kidd  
S/S S. Risko

3. 892 L  
Lt. R.O. Gruetzmacher ✓ *w/r*  
Sgt. C.L. Shaw  
S/S R.F. Addleman

2. 200 A  
Lt. D.F. Shea ✓  
S/S R.E. Lee  
S/S F.G. Falk

4. 689 I-1  
Lt. F.G. Atkinson ✓ *X*  
S/S J.C. Swafford  
S/S P.F. Glynn

FLIGHT IV

1. 209 K  
Lt. F.J. Harrold ✓  
S/S E.L. Griffin  
S/S C.W. Maziasz

3. 750 H  
Lt. D.T. Scanners ✓  
Sgt. J.L. Johnson  
Sgt. S.R. Zekliedewicz

2. 380 N  
Lt. E.L. Johnson ✓  
S/S W.J. Donahue  
Sgt. M. Hall

4. 217 D-1  
Lt. L.R. McBride ✓ *X*  
S/S J. McLee  
S/S R. Bertsler

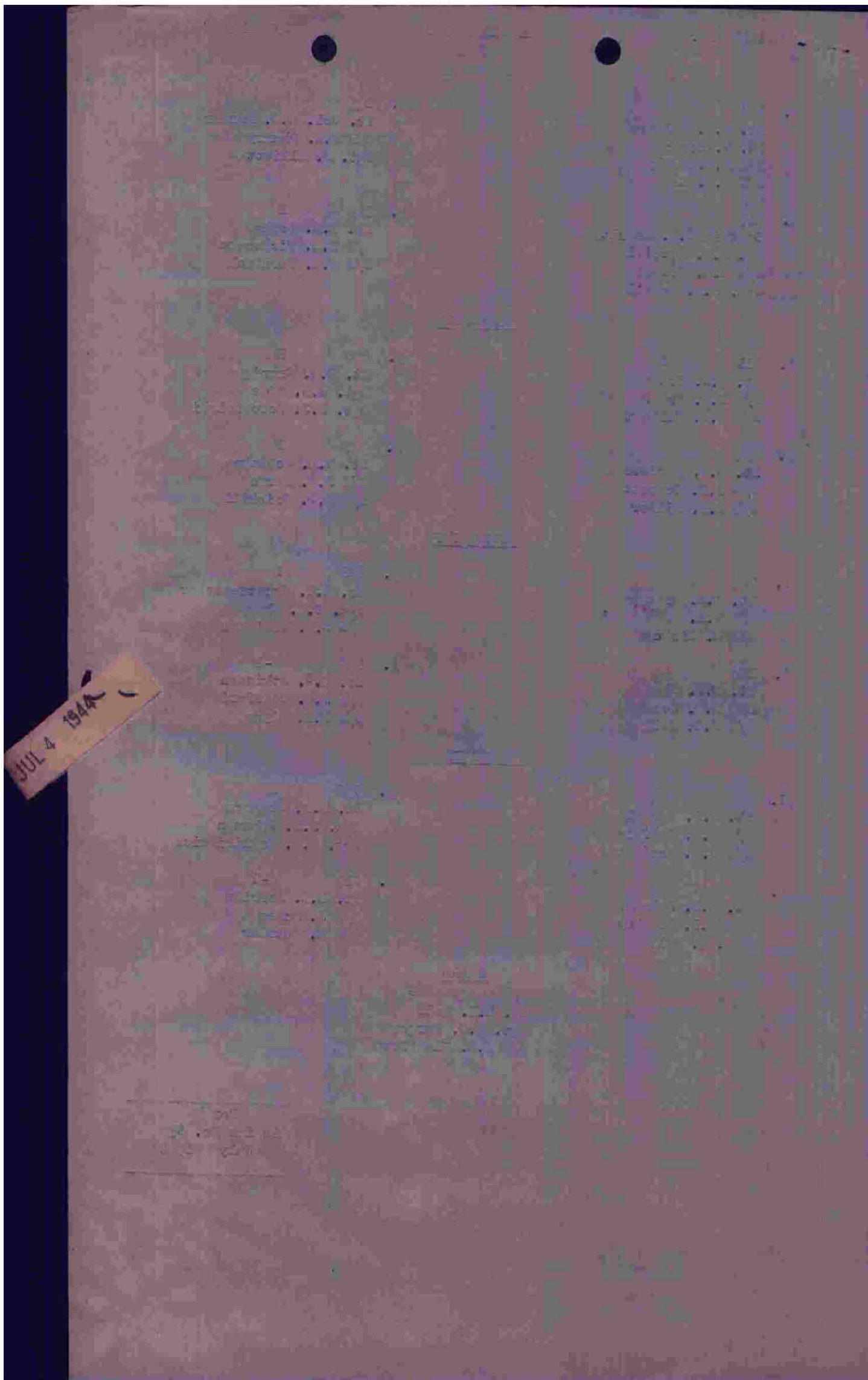
SEARE

978 S  
Lt. R.E. Hall *w/r*  
Sgt. L.G. Burger  
S/S D.S. Blackford

*Ritch Farley  
22  
900 Leher*

JUL 4 1944  
89

Box I  
Mission No. 89  
4 July 1944



MISSION NO. 89

LOADING LIST

4 July 1944

BOX II  
FLIGHT I

- |   |  |
|---|--|
| <p>1. 444 J<br/>Major R.F. Price ✓<br/>Lt. A.R. Hand ✓ H*<br/>S/S P.W. Field<br/>S/S G.E. Penning</p>           | <p>3. 362 L<br/>Lt. L.E. Hill ✓<br/>S/S R.W. Burch<br/>S/S C.H. Vost</p>             |
| <p>2. 719 V<br/>Captain R.B. Prentiss ✓<br/>Lt. R.T. McBrien ✓ w/r<br/>S/S J.E. McCreary<br/>S/S H.J. Sylva</p> | <p>4. 210 Q<br/>Lt. L.G. Pesde ✓ * w/r<br/>S/S L.M. Daugherty<br/>S/S C.L. Hibbs</p> |

FLIGHT II

- |  |  |
|--|--|
| <p>1. 724 A<br/>Lt. F.W. DeMand ✓<br/>Lt. H.J. Hanlon ✓ w/r<br/>S/S R.J. Troyer<br/>S/S C.W. Middleton</p> | <p>3. 714 N Lt. F.W. Hendersch ✓<br/><del>XXXXXXXXXXXXXXXXXXXXXXXXXXXX</del><br/><del>XXXXXXXXXXXXXXXXXXXXXXXXXXXX</del><br/><del>XXXXXXXXXXXXXXXXXXXXXXXXXXXX</del><br/>S/S R.M. Griswold<br/>S/S P.E. Coulombe</p> |
| <p>2. 363 L-1<br/>Lt. R.W. York ✓<br/>S/S L.A. Ashton *<br/>S/S H.J. Wilds</p>                             | <p>4. 493 V-1<br/>Lt. R.H. Smith ✓<br/>S/S A.A. Stockham<br/>S/S R.J. Mahoney</p>  |

FLIGHT III

- |   |   |
|---|---|
| <p>1. 214 C<br/>Lt. R.V. Wheeler ✓<br/>S/S J.S. Brower w/r<br/>S/S K.P. Brown</p> | <p>3. 221 F<br/>Lt. J.H. Miller ✓<br/>S/S R.G. Schram *<br/>S/S J. Galender</p>   |
| <p>2. 711 M<br/>Lt. T.J. Murray ✓<br/>S/S D.H. DeBower<br/>S/S R.J. Jones</p>     | <p>4. 165 H<br/>Lt. M. Zubon ✓<br/>T/S J.R.L. Tanner w/r<br/>S/S W.C. Russell</p> |

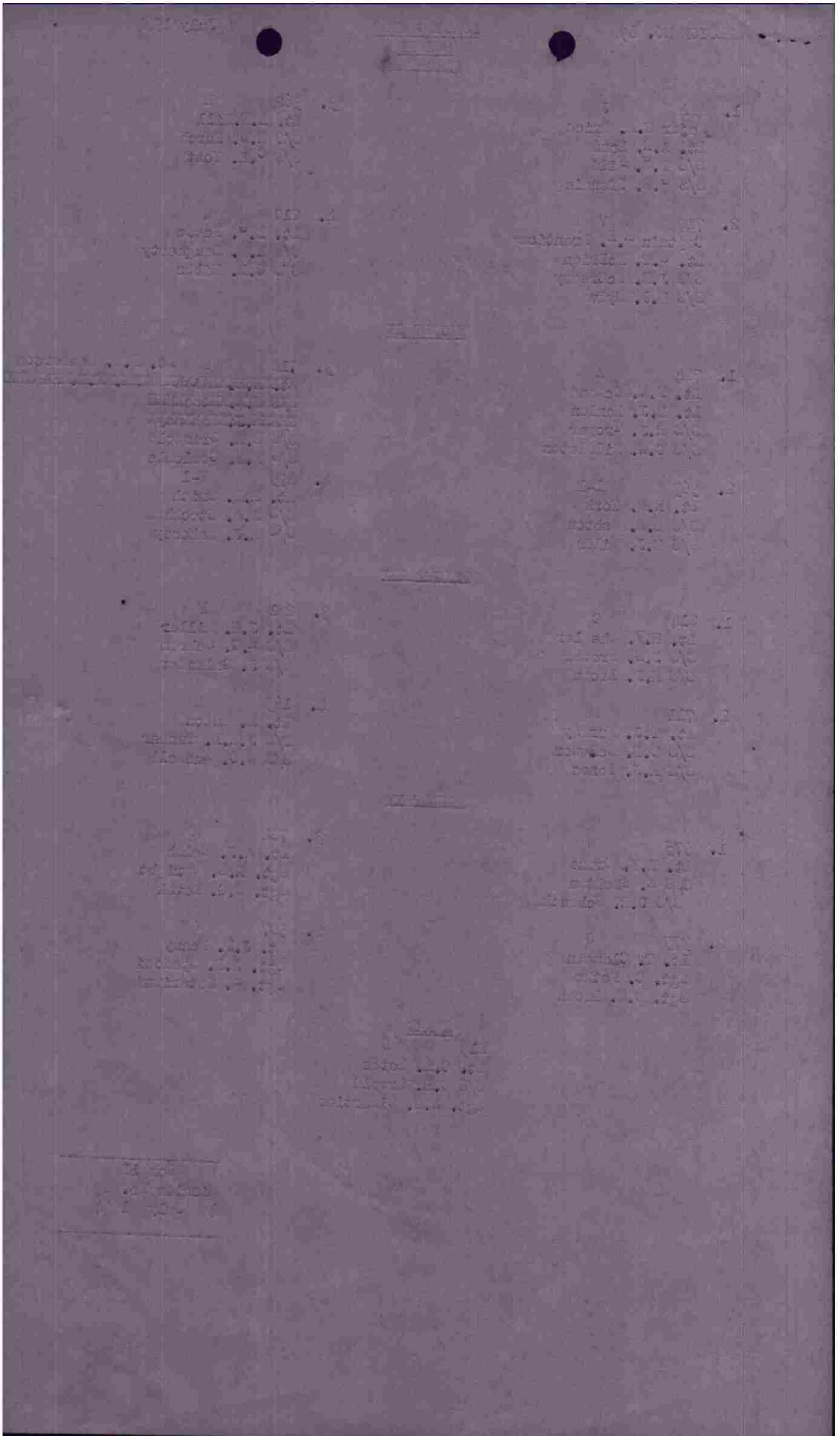
FLIGHT IV

- |  |  |
|--|--|
| <p>1. 975 W<br/>Lt. R.K. Cruze ✓<br/>S/S E. Shelton w/r<br/>S/S D.R. Schenck</p> | <p>3. 764 X<br/>Lt. A.J. Welsh ✓<br/>Sgt. R.E. Wright w/r<br/>Sgt. S.G. Kovak</p>      |
| <p>2. 379 G<br/>Lt. T. Clausen ✓<br/>Sgt. C. Fetko<br/>Sgt. D.M. Brown</p>       | <p>4. 907 O<br/>Lt. J.P. Kenny ✓ * w/r<br/>Sgt. J.K. Spadoni<br/>Sgt. F. Noteriani</p> |

~~SPARE~~  
219 D  
Lt. C.L. Estes  
S/S C.R. Orvold  
Sgt. A.E. DiMartino

*Redd Early  
as briefed  
no further*

Box II  
Mission No. 89  
4 July 1944



OPERATIONAL PRIORITY

FROM: 416TH BOMB GROUP (L)

TO : IX BOMBER COMMAND TO: 97TH COMBAT WING

416BG Y \_\_\_\_\_ E

CONFIDENTIAL IN THE CLEAR

"J" FORM OPERATIONAL CLEARANCE F-3 4 JULY 1944

PREPARED BY MAJOR HAROLD A RADETSKY

A.

B. BOX I . . . 1451 $\frac{1}{2}$  . . . BOX II . . . 1452 $\frac{1}{2}$ 

C. BILL OF PORTLAND

D. BOX I . . . R/T FANCYGIRL ONE

668 . . . 4 . . . Z P D I

670 . . . 12 . . . O F R H E A L I-1 K N M D-1

670 . . . 1 . . . SPARE . . . S

GROUP LEADER . . . 668 . . . Z

DEPUTY . . . 668 . . . P

BOX II R/T FANCYGIRL TWO

668 . . . 8 . . . J V L Q W G X O

671 . . . 8 . . . A L-1 N V-1 G M F H

671 . . . 1 . . . SPARE . . . D

SECOND BOX LEADER . . . 668 . . . J

DEPUTY . . . 668 . . . V

E. 12000

F. 49 DEGREES 09 MINUTES NORTH 01 DEGREES 35 MINUTES WEST

G. BOX I . . . 1520 . . . BOX II . . . 1521

H. 10

J. PTE. DE BARFLEUR

K. SELSEY BILL

L. BOX I . . . 1551 . . . BOX II . . . 1552

M.1.E.T.D. . . . BOX I . . . 1402 . . . E.T.A. . . . 1621 . . . T.O. ~~1342~~ 1342  
BOX II . . . 1403 . . . E.T.A. . . . 1622 . . . T.O. 1343

2. 6 x 500 G.P.

3. 4 HOURS

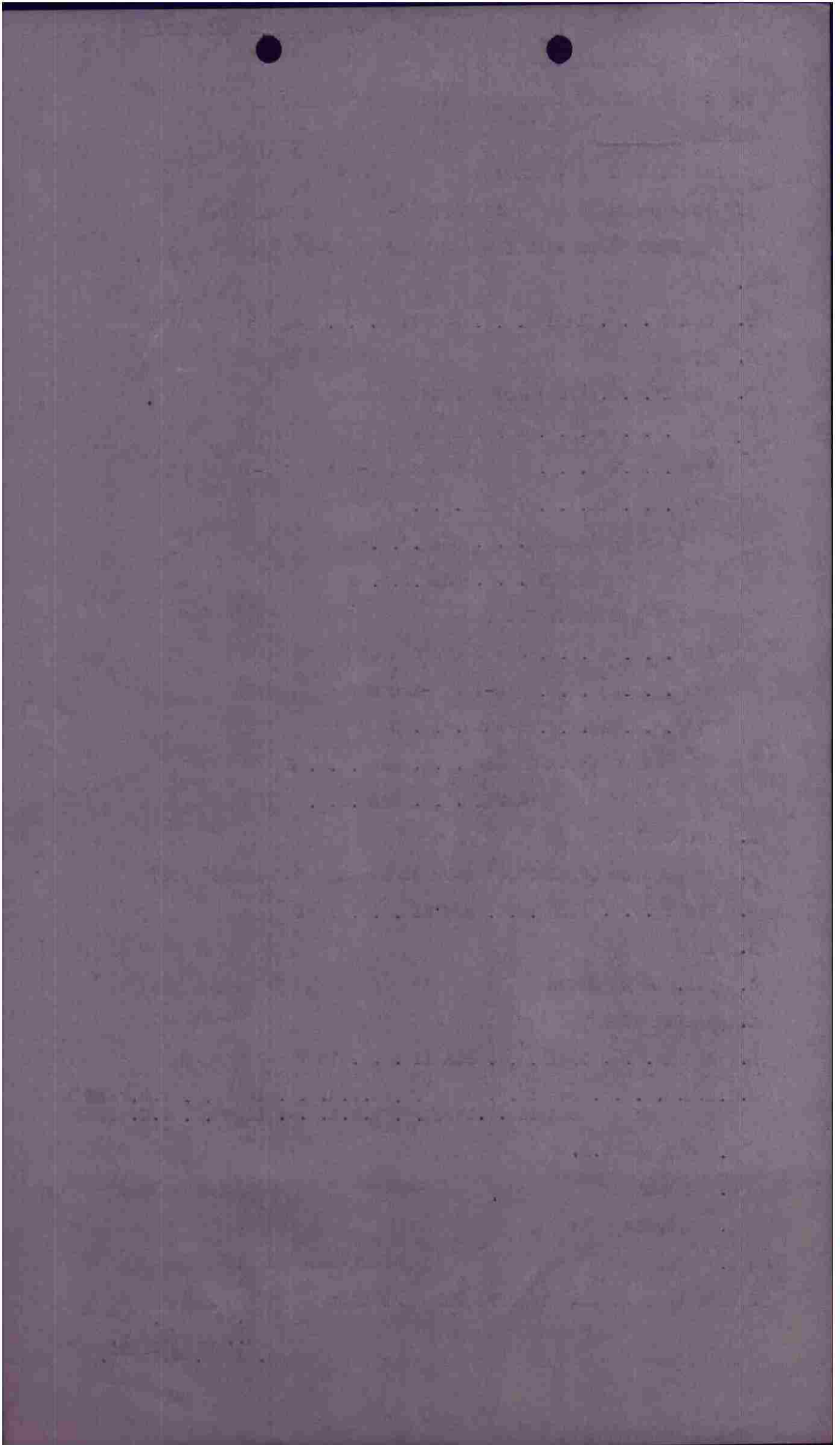
4. 9/J/654

5. NONE

MACE COBOMGR 416

I CERTIFY THAT THIS IS OFFICIAL BUSINESS:

JOHN M. BONURA,  
1st Lt., Air Corps,  
Opns. Stat. Officer.



CONFIDENTIAL

HEADQUARTERS  
416TH BOMB GROUP (L)  
OFFICE OF THE WEATHER OFFICER

APO 140  
4 July 1944

SUBJECT: Interrogation Report

TO : Staff Weather Officer, Headquarters IX  
Bomber Command, APO 140, U. S. Army.

BASE AT TAKEOFF: Visibility 5 miles. 6/10 to 7/10  
stratocumulus and cumulus at 2,500 feet.

ROUTE OUT: 6/10 cumulus and stratocumulus over England.  
Base 4,000 to 5,000 feet. Tops 8,000 feet.  
4/10 to 6/10 cirrus over entire route. Over  
channel cumulus decreased to 2/10 to 3/10 with  
occasional tops to 14,000 feet. France 6/10 with  
tops 6,000 to 8,000 feet. Visibility 4 to 5 miles.

TARGET: 10/10 cumulus with tops 10,000 feet and occasionally  
to 14,000 feet. Visibility 5 to 6 miles.

ROUTE BACK: Similar to route out but with 4/10 to 5/10  
stratocumulus over England and 6/10 to 7/10  
altocumulus estimated at 10,000 feet from  
south coast to base.

BASE ON RETURN: 3/10 to 4/10 stratocumulus 5,000 feet. 9/10  
altocumulus 10,000 feet. Visibility 5 miles.

WINDS: As forecast

TIME OVER TARGET: 1810

EFFECT OF WEATHER ON BOMBING: Clouds necessitated bombing  
on pathfinder.

*Walter D. Castle*  
WALTER D. CASTLE  
1st Lt., Air Corps,  
Staff Weather Officer.

1 Incl  
2 Route Forecast Form.

CONFIDENTIAL

WEATHERS FIELD  
416TH BOMB GP (L)

TAKE OFF - 1325  
RETURN - 1625

CONFIDENTIAL

*Oprmo*

# OPERATIONAL ROUTE FORECAST

DATE 4 JULY 1944  
PERIOD 1300 - 1700  
Hq SOS USARP 9-43/90W/15227

	A	B	C	D
	BASE TO TARGET	TARGET	TARGET TO BASE	
WEATHER	1 CLOUDY	CLOUDY	CLOUDY	
CLOUDS	2 4-5/10 CIRRUS ABOVE 24000 FT NIL MED CLOUD 4-6/10 CUHULUS BASE 3,000 FT TOPS 6-7,000 FT 2-3/10 CUHULUS OVER CHANNEL	6-8/10 CUHULUS BASE 3,000 FT TOPS 8-10,000 FT	SAME 4-5 ROUTE OUT	
ICING	3 FREEZING LEVEL 7,000 FT	SAME	SAME	
VISIBILITY	4 4-6 MILES AT BASE 6-9 MILES OVER CHANNEL	6-9 MILES		
HEIGHT	DIRECTION VELOCITY	DIRECTION VELOCITY	DIRECTION VELOCITY	DIRECTION VELOCITY
SURFACE	250 10	270 10		
5,000 FT	280 18	300 20		
10,000 FT	250 15	280 20		
12,000 FT	240 17	280 22		
15,000 FT	230 28	260 27		
FT				


CONFIDENTIAL

BASE ALTIMETER SETTING 29.75

TARGET SURFACE TEMP +13  
TEMP. AT 12,000 FT. -6

TARGET MEAN TEMP +4  
TARGET SURFACE (PRESSURE-AL T) +14.0

# AIRCRAFT REPORT

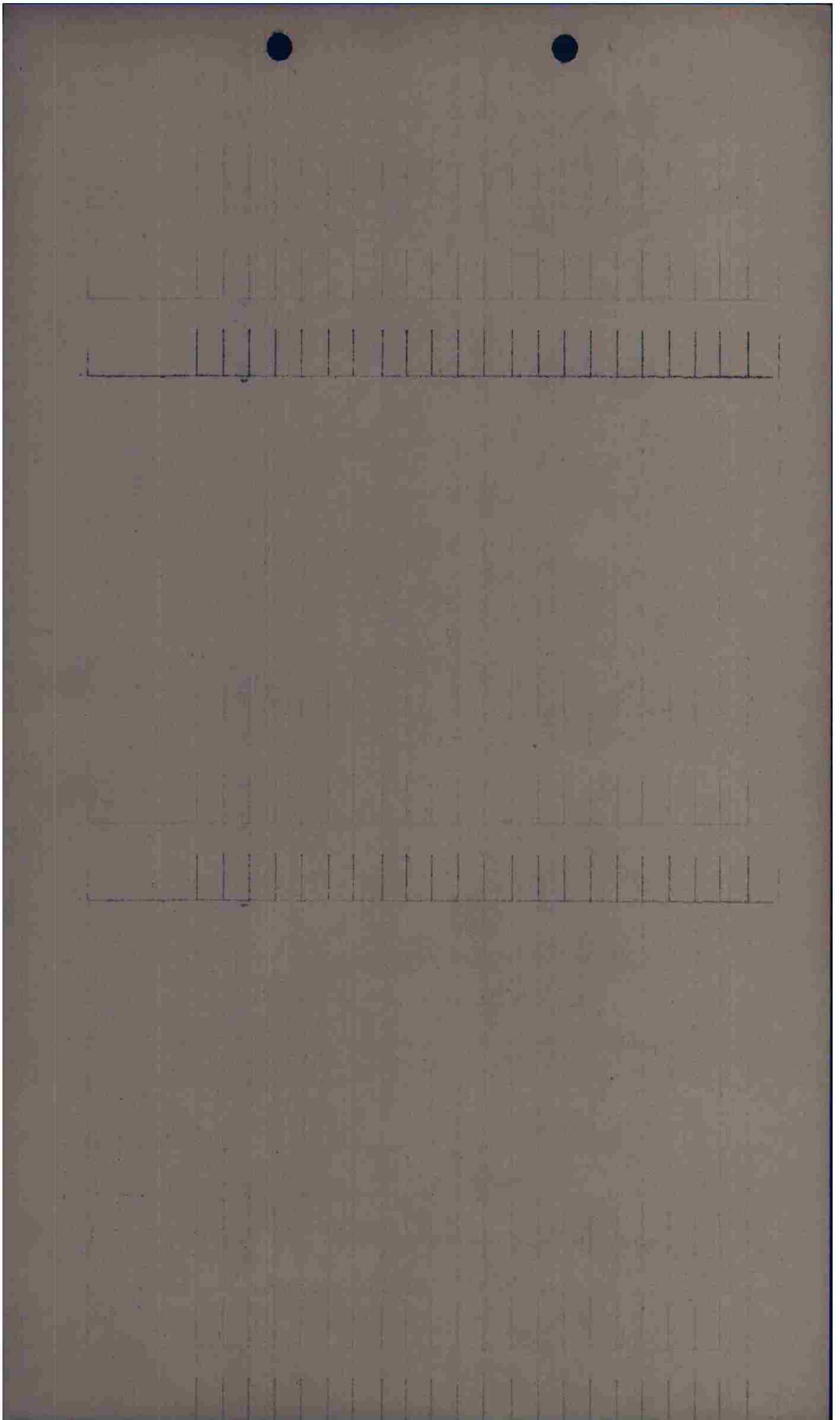
		BASE TO COAST	OVER CHANNEL OR SEA	OVER CONTINENT & TARGET	
TIME					
POSITION					
ALTITUDE					
CLOUD BELOW AIRCRAFT	AMOUNTS AND TYPE				
	HEIGHT OF BASE AND TOP				
CLOUD ABOVE AIRCRAFT	AMOUNTS AND TYPE				
	HEIGHT OF BASE AND TOP				
VISIBILITY					
TEMPERATURE					
WINDS					
REMARKS: AS WEATHER ENCOUNTERED, FRONTAL POSITIONS, ETC.					
<p>NOTE: AT LEAST ONE COMPLETE OBSERVATION SHOULD BE ENTERED IN EACH COLUMN. THE OTHER SIDE OF THIS CARD HELPED YOU - WON'T YOU GIVE THE NEXT FELLOW A BREAK!</p>		<p>CLOUD TYPES AND ABBREVIATIONS                      LOW CLOUDS = ST-STRATUS                      SC-STRATOCUMULUS                      MIDDLE CLOUDS = AS-ALTOSTRATUS                      AC-ALTOCUMULUS                      HIGH CLOUDS = CI-CIRRUS                      CS-CIRROSTRATUS                      CLOUDS OF VERTICAL EXTENT =                      CU-CUMULUS CB-CUMULONIMBUS</p>		 <p>The diagram illustrates three types of weather fronts: a Cold Front, a Warm Front, and a Stationary Front. A Cold Front is shown with a wedge-shaped symbol pointing towards the cold air mass, with a cold front symbol (a line with triangles) and clouds (CU, CS, AS, ST) forming a line. A Warm Front is shown with a wedge-shaped symbol pointing towards the warm air mass, with a warm front symbol (a line with semicircles) and clouds (CU, CS, AS, ST) forming a line. A Stationary Front is shown with a wedge-shaped symbol pointing in opposite directions, with a stationary front symbol (a line with triangles and semicircles) and clouds (CU, CS, AS, ST) forming a line. The diagram also labels 'COLD AIR' and 'WARM AIR' with arrows indicating their respective directions.</p>	

*Mission No. 89*

*Part I*

*4 July 1944*

S Q D M	A / C LTR	A / C NO.	PILOT	D I S T A N C E	TARGET	A T O	ENG. COAST OUT	ENEMY COAST IN	T O T	ENEMY COAST OUT	ENG. COAST IN	C A M E R A	F U L L O A D	B O M B O A D	E N D U R	L A T I T U D E	R E M A R K S
A	Z	640	Belmore			1332	Bisc	49°49'N 151°W		Re. Co	Delany	He 700	6500	4	1624		
A	P	717	745 Muty			1333	97	01°35'W		Baytown	Bisc				1625		
A	D	195	Hammer			1333	Yostland	12000		12000	9000				1626		
A	I	745	Preker			1333	14000	1520		1530	1571				1625		
C	O	211	Greene			1334	1411 1/2								1626		
C	F	227	Wendstrom			1334									1627		
C	R	680	Burging			1334									1628		
C	H	387	745 G. Miller			1334									1627		
C	E	224	Thomson			1335									1628		
C	A	200	Shira			1335									1629		
C	L	892	Bruetgenach			1335									1636		
C	I-1	689	Atkinson			1335									1630		
C	K	209	Harrell			1336									1631		
C	N	380	Johnson			1336									1631		
C	M	750	Johnson, D.J.			1336									1632		
C	D-1	217	M. B. Bue			1337									1632		
C	S	978	Hall			1337									1632		
B-26	✓	706				1332											
B-26	✓	579				1339											
B-26	✓	859				1338											
B-26	✓	675				1333											



*Mission No. 89*

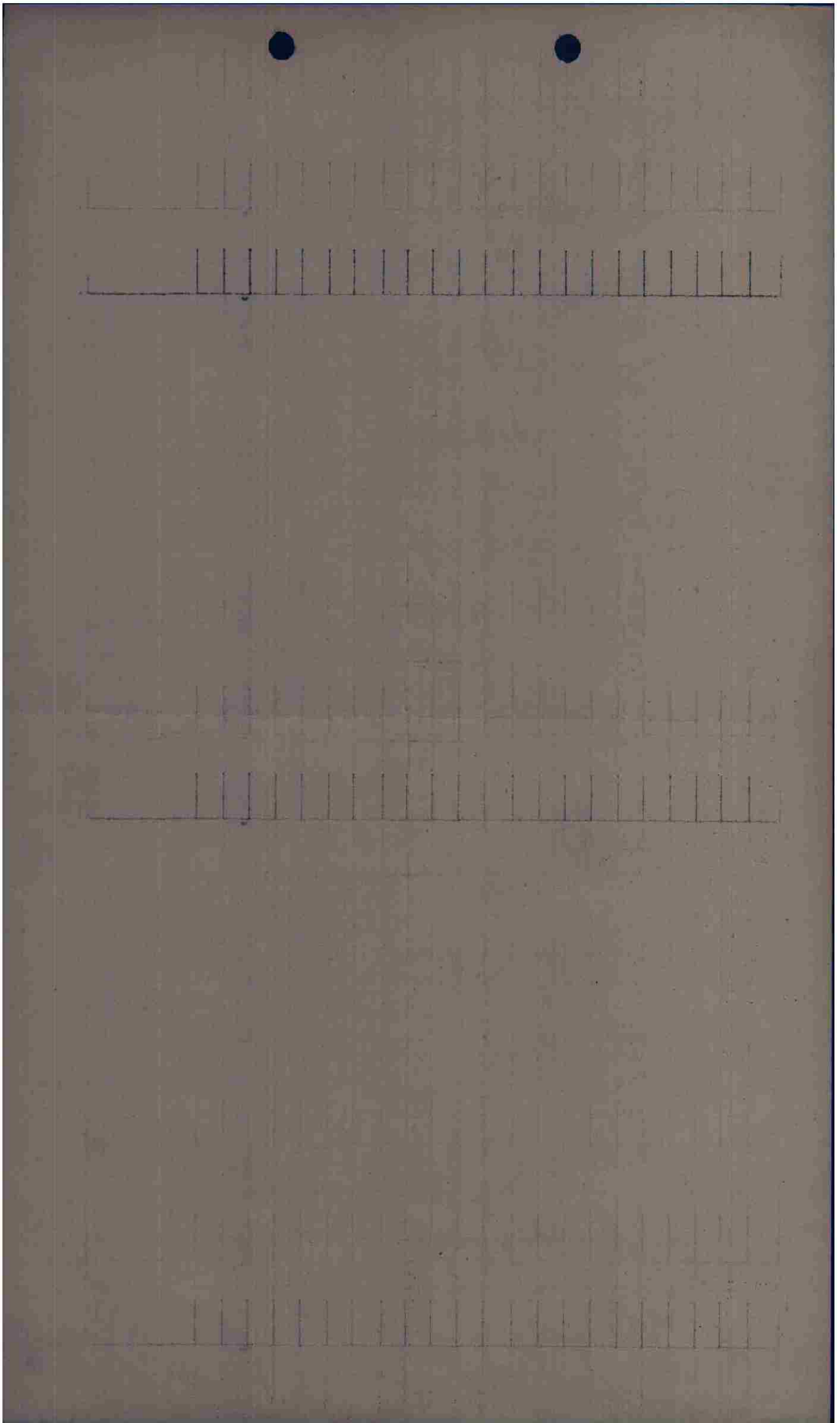
*Part II*

*4 July 1944*

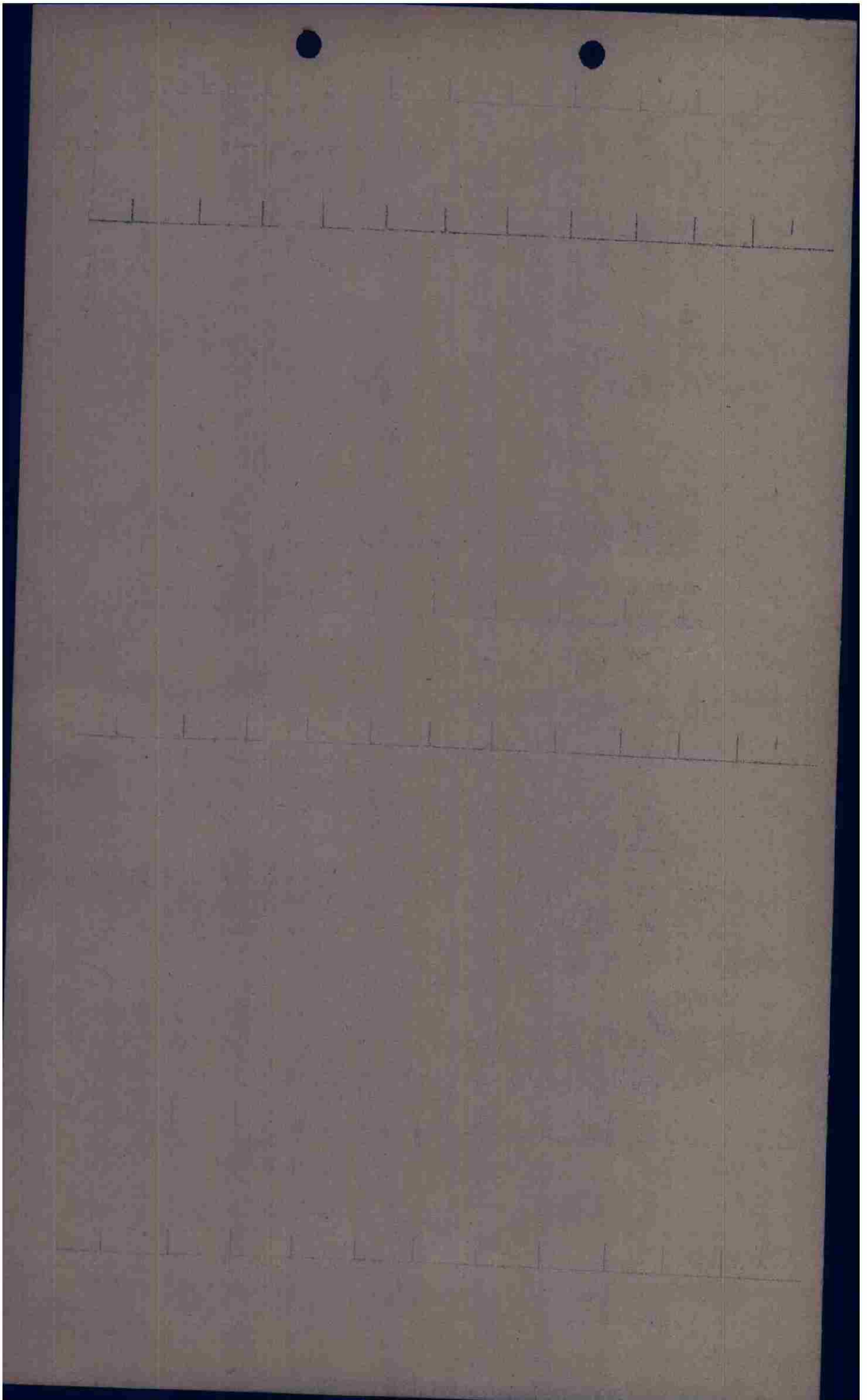
S Q D N	A / C LTR	A / C NO.	PILOT	D I S T A N C E	TARGET	A T O	ENG. COAST OUT	ENEMY COAST IN	T O T	ENEMY COAST OUT	ENG. COAST IN	C A M E R A	F U L L O L D	B O M B O A D	E N D U R	L A T I T U D E	R E M A R K S
A	J	444	<i>Price</i>			1338						H-C				1633	
A	V	719	<i>Price</i>			1339										1634	
A	L	362	<i>Price</i>			1339										1634	
A	Q	310	<i>Price</i>			1340										1635	
A	A	724	<i>De Mark</i>			1340										1636	
A	K-1	363	<i>Spork</i>			1340										1637	
A	N	714	<i>Spork</i>			1340										1637	
A	V-1	493	<i>Spork</i>			1341										1637	
A	C	314	<i>Spork</i>			1341										1638	
A	M	711	<i>Spork</i>			1341										1641	
A	F	321	<i>Spork</i>			1342										1640	
A	H	165	<i>Spork</i>			1342										1641	
A	W	975	<i>Spork</i>			1342										1641	
A	G	379	<i>Spork</i>			1342										1641	
A	X	764	<i>Spork</i>			1343										1642	
A	O	907	<i>Spork</i>			1343										1642	
A	D	219	<i>Spork</i>			1343										1643	

*Note Long All Day 1. no down*

*Spork*







08C0G 0IHAK 0IG0F 0IYAA 0IPPF V 0ILAI 0ILAI 4/04 0P

FROM 97TH COMBAT BOMB WING 04/1150B Y-0009-E  
 TO COMBOMCON IX  
 409TH BOMB GROUP  
 410TH BOMB GROUP  
 416TH BOMB GROUP  
 1ST PROV. PATHFINDER

OPERATIONAL PRIORITY BT

SECRET SEND IN THE CLEAR AUTH. LT. COL. MC AFEE

97TH COMBAT BOMB WING  
 APO 140  
 04 JULY 1944

FIELD ORDER NO. 109-407

MAPS: NORMAL

130

1. B. (1) CURRENT BOMB LINE  
 (2) ALLIED FIGHTERS WILL FURNISH AREA COVER.
2. THIS WING WILL ATTACK A MILITARY OBJECTIVE IN FRANCE.

ZERO HOUR: 04/1500B

3. A. 416TH BOMB GROUP
  - (1) GRID COORD. T-133 677 CODE NO. 9/J/654
  - (2) 2 BOX OF 16 A/C
  - (3) AREA COVER
  - (4) BASE TO MAIDEN HEAD TO SALISBURY TO BILL OF PORTLAND TO 49 DEG. 44 MIN. NORTH 02 DEG. 27 MIN. WEST TO TARGET.
  - (5) TARGET TURN LEFT TO SELSEY BILL TO MAIDEN HEAD TO BASE.
  - (6) 1ST BOX BOMB AT 12,500 FT. ON P.F.F.  
 2 ND BOX BOMB AT 12,000 FT. ON P.F.F.S
  - (9) M.P.I. ILL 4902W/23/B REF XM.026058 TO BE USED IF BOMBING IS VISUAL.
  - (10) BOMB LOAD AND FUSING  
 6 X 500 G.P. 1/10 SEC. NOSE 1/100 SEC TAIL
  - (12) BOMB ON P.F.F. UNLESS GIVEN SIGNAL FROM P.F.F. TO BOMB VISUAL
  - (13) TIME OVER TARGET FOR 1. ST BOX ZERO HOUR PLUS 20 AND 2ND BOX ZERO PLUS 21

X. (1) TO (4) NO CHANGE

4. NO CHANGE

5. COMMUNICATIONS:

- C. 416TH BOMB GROUP:
  - (2) FANCYGIRL
  - (11) AIR SUPPORT REQUEST MISSION PROCEDURE IN EFFECT, CONTACT GROUND CONTROL 5 MINUTES PRIOR TO LADFALL.
  - (12) MISSION C/S AND NO. ZLW3/ZLW3.
  - (13) AIR SUPPORT CONTROL PARTY C/S BLENDWELL.

X. GENERAL INFORMATION:

- (3) DELETE 9 ALL DAY, DELETE 7 BETWEEN 1400-1630.
- (10) BVTA/BVTA

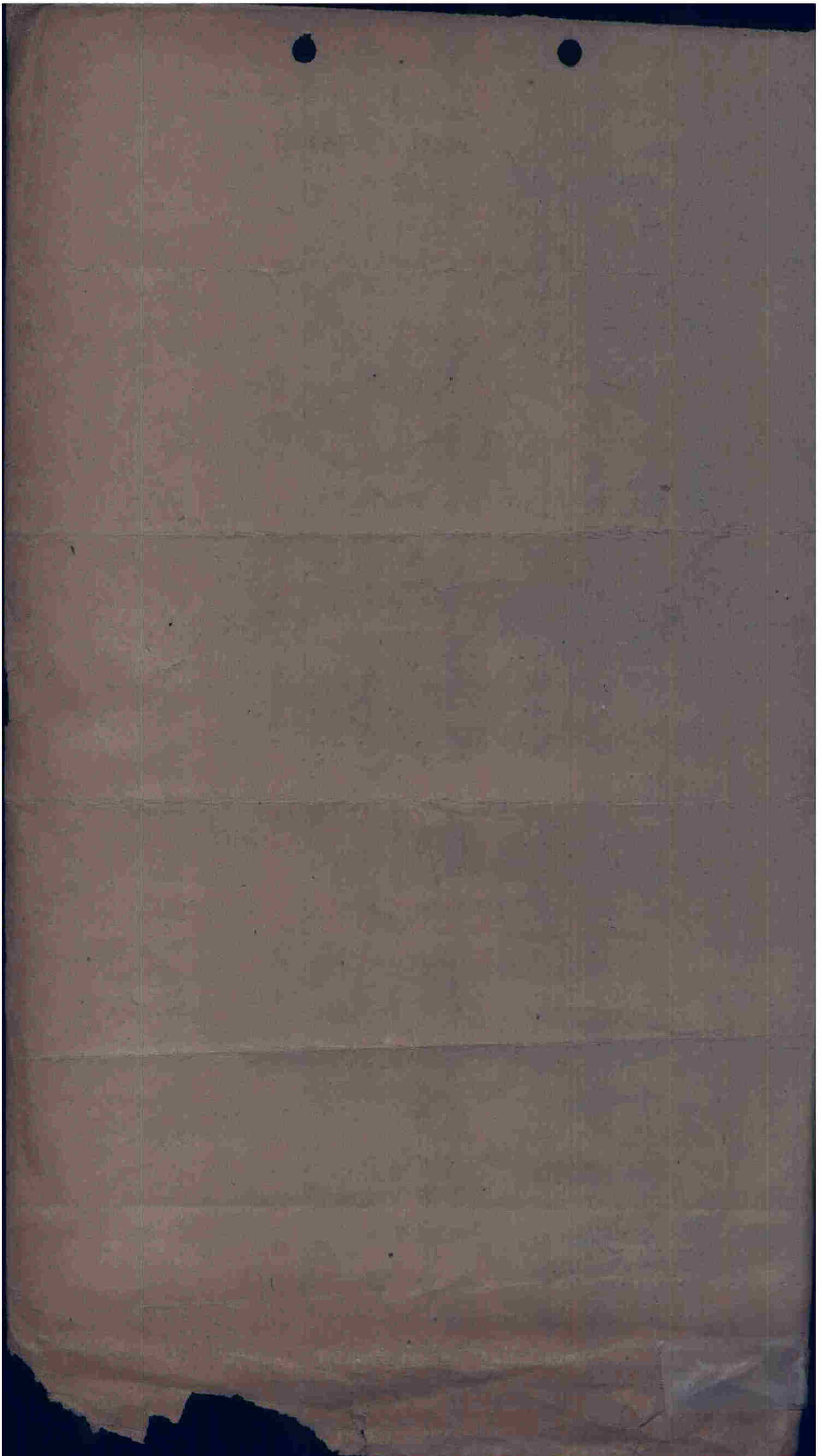
COCBTWIG

BT 04/1150B

CC: LAST WORD IN 4. (11) SHOULD BE LANDFALL IN STEAD OF LADFALL

0IC0G R.....04/1223B DC AR  
 0IPPF R.....04/1223B MET AR  
 0IHAK R.....(INFOR COPY) .....04/1225B EB AR  
 0IG0F 4...;(INFO COPY).....04/1225B AL AR  
 0IYAA R.....04/1225B EJ AR

RRR/ LEG..  
 AR



OICOG OILAI V YAA YAA 14/84 OP  
 FROM 416TH BOMB GROUP (L) 04/1800B Y-53-D  
 TO HQ IX BOMBER COMMAND ATTEN: A-2  
 HQ 97TH COMBAT WING ATTEN: A-2

OPERATIONAL PRIORITY CONFIDENTIAL BT

OPFLASH NO. 88 FOR 4 JULY 1944.

- A. (1) DEFENDED POINT T 133677  
 (2) DEFENDED POINT T 133677
- B. (1) 416TH BG  
 (2) 32 A-20'S & B-26 PFF.  
 (3) 2 A-20'S PERSONNEL ERROR. PILOTS USED WRONG SELECTOR SWITCHES.  
 (4) 30 A-20'S AND 4 B-26'S ON PRIMARY.
- C. (1) 1332  
 (2) 1521 - 1523  
 (3) 160A
- D. (1) NONE  
 (2) 0-0-0  
 (3) 0-0-0
- E. BOMBED ON PATHFINDERS. RESULTS UNOBSERVED
- F. (1) (A) NIL  
 (B) NIL  
 (2) (A) NIL  
 (B) NIL
- G. CLOUD COVER PREVENTED OBSERVATION.
- H. (1) 10/10 CUMULUS TOPS TO 10,000 FEET  
 VISIBILITY 5 MILES  
 (2) ELSEWHERE OVER CONTINENT 6/10 TO 8/10 CUMULUS TOPS TO 8,000 FEET. VISIBILITY 5 MILES.
- I. ON PRIMARY: 144 X 500 GP (INCLUDING 4 X 500 GP BY 4 B-26'S)  
 6 X 250 GP (BY B-26'S)  
 4 X 1000 GP (BY B-26'S)  
 RETURNED 10 X 500 GP (BY A-20'S)
- J. 12,000 - 12,500 FEET.

MACE COBOMGR 416

BT 04/1800B

EW AR KK

OILIA R.....04/1816B

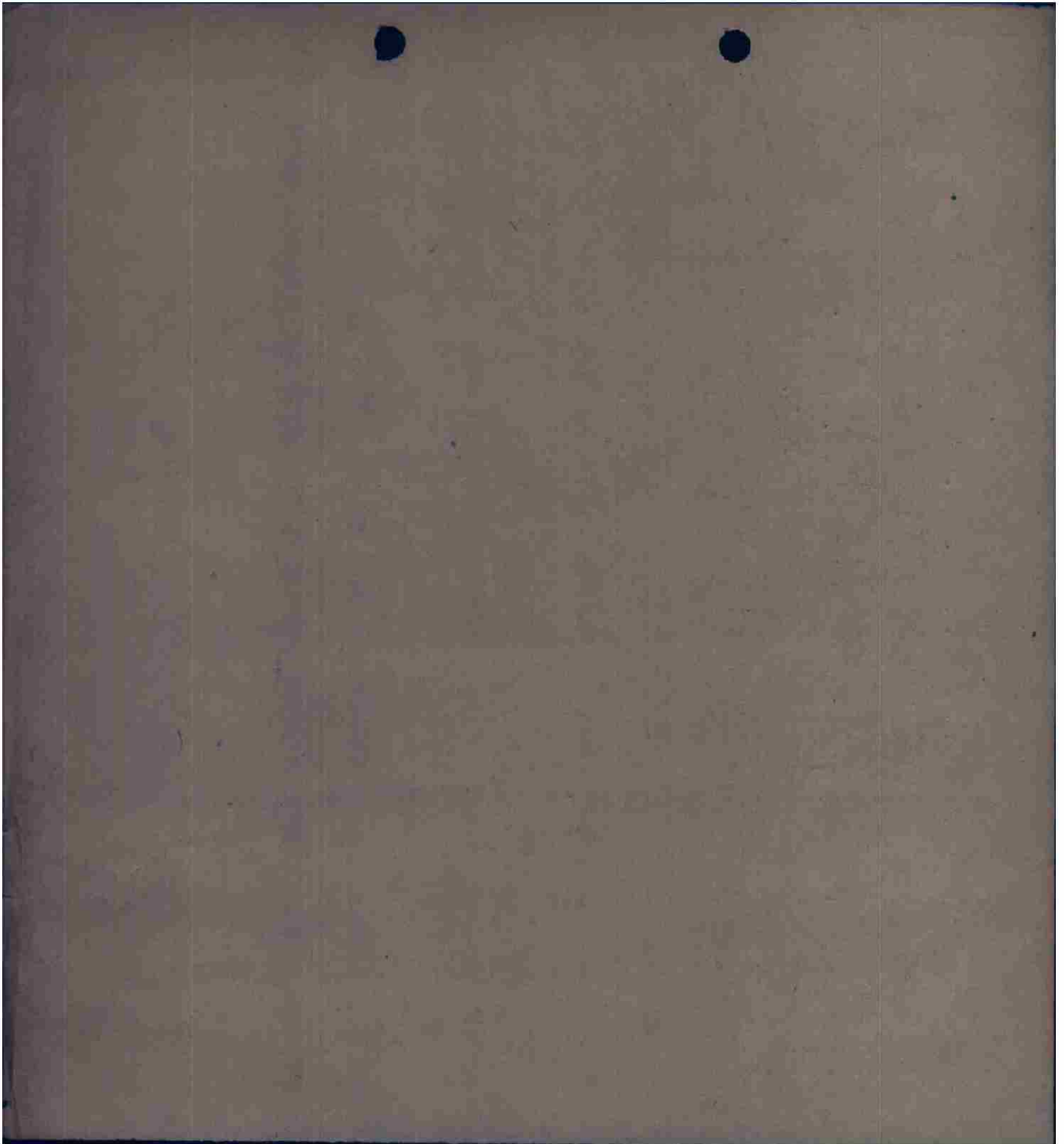
SS AR

OICOG R.....04/1812B

PJC AR

T

THIS PAGE DECLASSIFIED IAW EO12958



THIS PAGE DECLASSIFIED IAW EO12958

COG LAI V YAA YAA 19/04 P

T - ADDRESSEE

FROM 416TH BOMB GROUP (L) 04/2020B

TO IX BOMBER COMMAND  
ADV HQS. 9TH AIR FORCE ATT: A-2  
97TH COMBAT WING

CONFIDENTIAL PRIORITY BT Y-27-D

FIRST PHASE REPORT S/A PHOTOS 4/7/44

A - LA. MORRIERE STRONG POINT T-133677.

B - SAME AS A.

K - PATHFINDER MISSION. NO PHOTO COVERAGE DUE TO 14X21 10/10  
CLOUD XXX GBE COVER.

MACE COBOMGR 416

BT 04/2020B

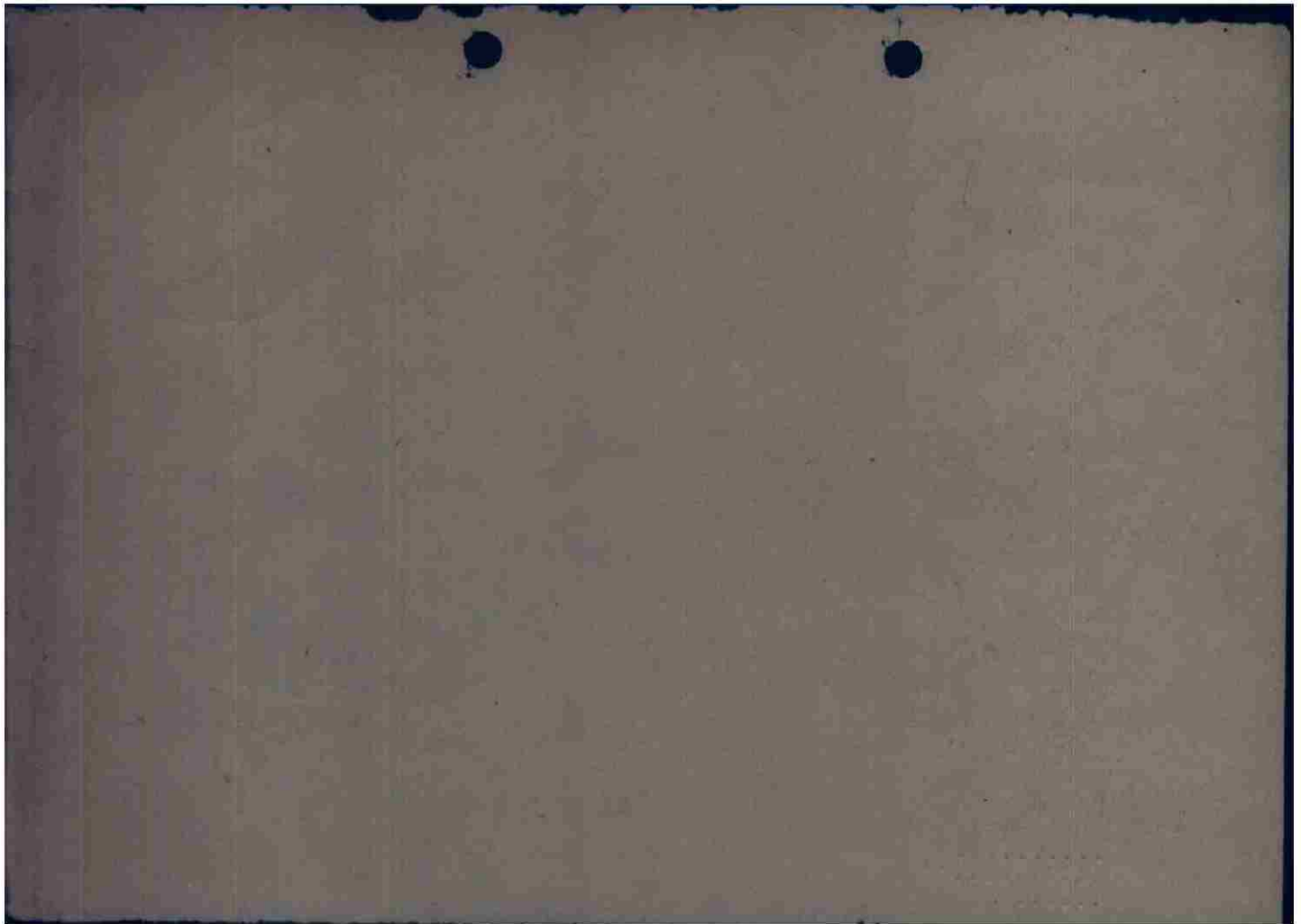
EW AR KK

LAI R.....04/2032B SS AR

COG R.!!!.....

COG R.....04/2030B DLS AR KKKKKK

THIS PAGE DECLASSIFIED IAW EO12958



THIS PAGE DECLASSIFIED IAW EO12958

C O N F I D E N T I A L

FROM COBOMGR 416

TO COCBTWIG 97 ATTN: SIG O

A - YS - 85

B - 4 JULY 1944

C - 34 A/C

D - 658 - Z - VHF SET OUT ON GROUND, OK IN AIR, LOOSE CONNECTION IN  
JACKBOX - REPAIRED, CHECKED OK.  
670 - H - INTERPHONE OUT, BLOWN FUSE - FUSE REPLACED.

E - NONE

MACE COBOMGR 416

OFFICIAL:

DANIEL J. NOLAN  
1ST LT., AIR CORPS,  
SIGNAL OFFICER.

